

PRACTICE **MOCK**



SBI PO

PREVIOUS YEAR PAPER

PDF WITH SOLUTIONS

DOWNLOAD FREE PDF 

SBI PO 2023

Take a **FREE** Mock Test
Get Your All India Rank

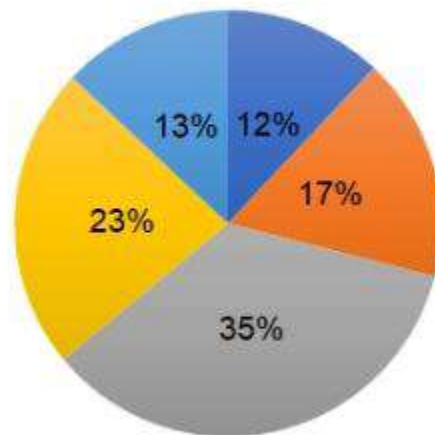
PRACTICE MOCK

SBI PO Previous Year Questions – Quantitative Aptitude**Directions:** Answer the questions based on the information given below.

There are total 6400 books in a college library which started issuing books in the last week of November, out of which, 2400 books were issued to the students in the last week of November and 40% of the remaining books are issued in the following week on Monday. The pie chart given below shows the percentage distribution of the number of books issued on Tuesday to different types of students (1st year, 2nd year, 3rd year, 4th year and 5th year) of the college.

Note: Number of books issued to 2nd year students is 30 more than the number of books issued to 1st year students on Tuesday.

Percentage of books issued to different students on Tuesday



■ 1st year ■ 2nd year ■ 3rd year ■ 4th year ■ 5th year

Question 1: If the number of books issued to 3rd year student on Monday is 50% more than the number of books issued to 3rd year student on Tuesday, find the number of books issued to 3rd year student on Monday.

- A) 315
- B) 325
- C) 295
- D) 335

E) None of these

Question 2: The number of books issued to 5th year students on Tuesday is what percentage of the number of books issued to 4th year students on the same day?

A) 52.4%

B) 56.5%

C) 61.3%

D) 65.9%

E) 49.1%

Question 3: Find the total number of books issued till Tuesday starting from the last week of November.

A) 4200

B) 4400

C) 4600

D) 4800

E) None of these

Question 4: 20% of the books issued till Tuesday was deposited on Wednesday, and 720 books were issued on Wednesday. Find the number of books left in the library on Wednesday at the end of the day.

A) 2000

B) 1900

C) 1800

D) 2100

E) None of these

Question 5: If each student of 5th year was issued 3 books on Tuesday, then find the number of 5th year students who were issued books on Tuesday.

A) 26

B) 28

C) 32

D) 36

E) None of these

PRACTICE MOCK

Question 6: What approximate value will come in place of the question mark (?) in the following question? (Note: You are not expected to calculate the exact value.)

$$782.85^{1/2} + 37.505\% \text{ of } 2688.04 + 48.12 \times 34.25 \div (67.78) = ?$$

- A) 780
- B) 1340
- C) 2160
- D) 1060
- E) 1680

Question 7: What approximate value will come in place of the question mark (?) in the following question? (Note: You are not expected to calculate the exact value.)

$$116.89 + 286.03 + 128.89 - 50\% \text{ of } 960.09 = 64.89\% \text{ of } ?$$

- A) 420
- B) 680
- C) 240
- D) 580
- E) 80

Question 8: What approximate value will come in place of the question mark (?) in the following question?(Note: You are not expected to calculate the exact value.)

$$\{1244.9547 + 3.03 \times 1086.98 - (320.97 \times 11.0543)\} = ?$$

- A) 423
- B) 298
- C) 516
- D) 975
- E) 284

Question 9: What approximate value will come in place of the question mark (?) in the following question?(Note: You are not expected to calculate the exact value.)

$$(75.04\% \text{ of } 839.95 - 15.92 \times 15.13) = ? \times 26.09$$

- A) 95

- B) 15
- C) 135
- D) 65
- E) 185

Question 10: What approximate value will come in place of the question mark (?) in the following question? (Note: You are not expected to calculate the exact value.)

$$62.45\% \text{ of } 3200.09 + 40.12\% \text{ of } ? = 2095.94$$

- A) 240
- B) 120
- C) 380
- D) 20
- E) 520

Question 11: What approximate value will come in place of the question mark (?) in the following question? (Note: You are not expected to calculate the exact value.)

$$265.08 + (79.98\% \text{ of } 750.08) \div 15.12 + ? = 428.09$$

- A) 43
- B) 123
- C) 246`
- D) 372
- E) 423

SBI PO 2023**Take a FREE Mock Test**
Get Your All India Rank

PRACTICE MOCK

Question 12: Mixture 'A' contains 80% acetone and rest 32 litres water. Mixture 'B' contains 72 litres acetone and rest 55% water. When two mixtures are mixed, then find the ratio of acetone to water in the resultant mixture.

- A) 2:1
- B) 6:5
- C) 5:3

D) 3:2

E) 4:3

Question 13: Ravish takes 32 days to complete a work while Arnab can complete the same work in 12 days less than Ravish. If Varun can complete 25% of the work in 12 days, then find the time taken by Ravish, Arnab and Varun together to complete 61.25% of the work.

A) 9 days

B) 4 days

C) 8 days

D) 12 days

E) 6 days

Question 14: Two dice were tossed simultaneously. Find the probability that the sum of the numbers obtained on the two dice is a prime number.

A) $\frac{5}{12}$

B) $\frac{3}{8}$

C) $\frac{4}{9}$

D) $\frac{1}{8}$

E) $\frac{2}{9}$

Question 15: A dog takes 5 leaps for every 4 leap of a frog. If 1 leap of dog is equal to 2 leaps of the frog, then find the ratio of the speed of the dog to that of the frog.

A) 7:5

B) 9:4

C) 3:1

D) 5:2

E) 7:2

Question 16: Anderson is cycling at an average speed of 12 km/hr such that he can reach a certain point at 12 noon. If he cycles at 20 km/hr, then he will reach the destination at 10 a.m. At what speed he should cycle to reach the destination at 11 a.m.

A) 15 km/hr

B) 12.5 km/hr

C) 16.5 km/hr

D) 16 km/hr

E) 14 km/hr

Question 17: The curved surface area of a cylinder whose radius of base and height are in the ratio 5:2, respectively, is 3080 cm^2 . If the circumference of the base of a cone is 132 cm less than that of the cylinder, then find the radius of the base of the cone.

A) 7 cm

B) 21 cm

C) 35 cm

D) 28 cm

E) 14 cm

Question 18: The percentage profit earned by selling an article 'A' for Rs. 2800 is equal to the loss percent incurred by the selling the same article for Rs. 2200. Find the selling price when another article 'B' whose cost price is Rs. 700 more than that of article 'A' is sold at 15% profit.

A) Rs. 3680

B) Rs. 3240

C) Rs. 3560

D) Rs. 3450

E) Rs. 3220

Question 19: When 12 years is subtracted from the present age of Vipul and the obtained result is divided by 3, then the present age of his nephew is obtained. If the present age of his nephew is 4 years less than the present age of Vipul's son who is 16 years old, then find the present age of Vipul.

A) 36 years

B) 54 years

C) 48 years

D) 33 years

E) 51 years

Question 20: If the sum of the 1st 21 terms of an AP is equal to the sum of 1st 31 terms of that AP, then find the sum of the 1st 52 terms of the same AP.

A) 0

- B) -212
- C) -325
- D) 212
- E) Can't be determined

Question 21: Suman sold an article at 40% profit. If the profit percentage had been numerically equal to CP, then the profit earned had been 250% more. Find the amount for which Suman sold the article originally.

- A) Rs. 164
- B) Rs. 208
- C) Rs. 196
- D) Rs. 224
- E) None of these

Question 22: 240 metre long train 'A' is running with a speed of 72 km/hr. Train 'B' which is 360 metre long is running with a speed of 108 km/h in opposite direction of train 'A'. For how much time, the smaller train is completely obscured by the larger train?

- A) 2.4 seconds
- B) 5.6 seconds
- C) 3.2 seconds
- D) 1.8 seconds
- E) None of these

Question 23: There are total 300 students in three sections A, B and C of a class. The average marks of students all three sections were 90.7. The average marks of students of section B and C was 92.5 and the average marks of students of section A was 88. Ratio of number of students in section B and C is 5:4, respectively. Find number of students in section B.

- A) 80
- B) 100
- C) 120
- D) 60
- E) None of these

Question 24: A train can cross 148 metres long platform in 20.5 seconds while a 192.8 metres long tunnel in 23.3 seconds. Find the time taken by the train to cross a man who is coming towards it at a rate of 28.8 km/h

- A) 7.5 seconds
- B) 6.5 seconds
- C) 9.5 seconds
- D) 8.5 seconds
- E) 12.5 seconds

Question 25: The following numbers form a series. Find the odd one out.

114, 138, 98, 154, 82, 172

- A) 138
- B) 98
- C) 82
- D) 114
- E) 172

Question 26: The following numbers form a series. Find the odd one out.

8, 19, 61, 249, 1251, 7517

- A) 19
- B) 7517
- C) 249
- D) 1251
- E) 61

Question 27: The following numbers form a series. Find the odd one out.

13, 30, 128, 147, 588, 607

- A) 30
- B) 607
- C) 128
- D) 147
- E) 588

PRACTICE MOCK

Question 28: The following numbers form a series. Find the odd one out.

228, 307, 188, 357, 132, 421

- A) 421
- B) 132
- C) 188
- D) 357
- E) 307

Question 29: The following numbers form a series. Find the odd one out.

13, 21, 32, 46, 63, 85

- A) 21
- B) 85
- C) 46
- D) 63
- E) 32

Question 30: The following numbers form a series. Find the odd one out.

132, 148, 196, 276, 378, 532

- A) 276
- B) 532
- C) 378
- D) 148
- E) 196

Direction: Answer the questions based on the information given below.

A shopkeeper sold two types of shawls i.e. Pashmina and Knit on different days of a week. The table given below shows the total number of shawls sold, and ratio of number of Pashmina to Knit shawls sold by the shopkeeper.

Days	Total number of shawls sold	Ratio of number of Pashmina to Knit shawls sold
------	-----------------------------	---

Monday	1200	8:7
Tuesday	1440	7:5
Thursday	1080	5:4
Wednesday	1280	9:7
Friday	1620	4:5

Question 31: What is the ratio of number of Pashmina shawls sold on Monday to number of Knit shawls sold on Thursday?

- A) 2:3
- B) 4:3
- C) 3:1
- D) 5:4
- E) None of these

Question 32: What is the average of number of shawls sold by the shopkeeper on the given days except Thursday?

- A) 1395
- B) 1375
- C) 1385
- D) 1345
- E) None of these

SBI PO 2023**Take a FREE Mock Test**
Get Your All India Rank

PRACTICE MOCK

Question 33: Number of Pashmina shawls sold on Tuesday is how much percent more/less than the number of Knit shawls sold on Wednesday?

- A) 70%
- B) 50%

- C) 75%
- D) 60%
- E) None of these

Question 34: What is the difference between number of Pashmina shawls sold on Thursday, and number Knit shawls sold on Friday?

- A) 280
- B) 320
- C) 300
- D) 400
- E) None of these

Question 35: Number of Pashmina and Knit shawls sold on Saturday is 25% more and 20% more, respectively than the same sold on Friday and Tuesday. Total number of shawls sold on Saturday is:

- A) 1600
- B) 1640
- C) 1480
- D) 1520
- E) None of these

निर्देश: नीचे दी गई जानकारी के आधार पर प्रश्नों के उत्तर दें।

एक college के पुस्तकालय में कुल 6400 पुस्तकें हैं, जिसने November के अंतिम सप्ताह में किताबें issue करना शुरू किया था, जिसमें से 2400 पुस्तकें November के अंतिम सप्ताह में छात्रों को issue की गई थीं और आने वाले सप्ताह में Monday को शेष में से 40% पुस्तकें issue की गई थीं। नीचे दिया गया pie chart college के विभिन्न प्रकार के छात्रों (1st वर्ष, 2nd वर्ष, 3rd वर्ष, 4th वर्ष और 5th वर्ष) को Tuesday को issue पुस्तकों की संख्या का प्रतिशत वितरण दर्शाता है।

नोट: Tuesday को 2nd वर्ष के छात्रों को जारी की गई पुस्तकों की संख्या Tuesday को 1st वर्ष, के छात्रों के लिए issue की गई पुस्तकों की संख्या से 30 अधिक है।

C) 4600

D) 4800

E) \u0907\u0928\u092e\u0947\u0902 \u0938\u0947 \u0915\u094b\u0908 \u0928\u0939\u0940

प्रश्न 4: Tuesday तक issued 20% किताबें Wednesday,को जमा की गई, और Wednesday को 720 किताबें issue की गई। दिन के अंत में Wednesday को पुस्तकालय में बची हुई पुस्तकों की संख्या ज्ञात करें ?

A) 2000

B) 1900

C) 1800

D) 2100

E) \u0907\u0928\u092e\u0947\u0902 \u0907 \u0915\u094b\u0908 \u0928\u0939\u0940\u0902

प्रश्न 5: यदि Tuesday को 5thवर्षके प्रत्येक छात्र ने तीन किताबें issue करवाई तो 5thवर्षके छात्रों की संख्या ज्ञात करें जिन्हें Tuesday को पुस्तकें issue की गई थीं ?.

A) 26

B) 28

C) 32

D) 36

E) \u0907\u0928\u092e\u0947\u0902 \u0938\u0947 \u0915\u094b\u0908 \u0928\u0939\u0940\u0902

प्रश्न 6: निम्नलिखित प्रश्न में प्रश्न चिह्न (?) के स्थान पर क्या अनुमानित मान आएगा? (नोट: आपको सटीक मान की गणना करने की आवश्यकता नहीं है।)

$$782.85^{1/2} + 37.505\% \text{ of } 2688.04 + 48.12 \times 34.25 \div (67.78) = ?$$

A) 780

B) 1340

C) 2160

D) 1060

E) 1680

प्रश्न 7: निम्नलिखित प्रश्न में प्रश्न चिह्न (?) के स्थान पर क्या अनुमानित मान आएगा? (नोट: आपको सटीक मान की गणना करने की आवश्यकता नहीं है।)

$116.89 + 286.03 + 128.89 - 50\% \text{ of } 960.09 = 64.89\% \text{ of ?}$

- A) 420
- B) 680
- C) 240
- D) 580
- E) 80

प्रश्न 8: निम्नलिखित प्रश्न में प्रश्न चिह्न (?) के स्थान पर क्या अनुमानित मान आएगा? (नोट: आपको सटीक मान की गणना करने की आवश्यकता नहीं है।)

$\{1244.9547 + 3.03 \times 1086.98 - (320.97 \times 11.0543)\} = ?$

- A) 423
- B) 298
- C) 516
- D) 975
- E) 284

प्रश्न 9: निम्नलिखित प्रश्न में प्रश्न चिह्न (?) के स्थान पर क्या अनुमानित मान आएगा? (नोट: आपको सटीक मान की गणना करने की आवश्यकता नहीं है।)

$(75.04\% \text{ of } 839.95 - 15.92 \times 15.13) = ? \times 26.09$

- A) 95
- B) 15
- C) 135
- D) 65
- E) 185

प्रश्न 10: निम्नलिखित प्रश्न में प्रश्न चिह्न (?) के स्थान पर क्या अनुमानित मान आएगा? (नोट: आपको सटीक मान की गणना करने की आवश्यकता नहीं है।)

$62.45\% \text{ of } 3200.09 + 40.12\% \text{ of ?} = 2095.94$

- A) 240
- B) 120

PRACTICE MOCK

C) 380

D) 20

E) 520

प्रश्न 11: निम्नलिखित प्रश्न में प्रश्न चिह्न (?) के स्थान पर क्या अनुमानित मान आएगा? (नोट: आपको सटीक मान की गणना करने की आवश्यकता नहीं है।)

$$265.08 + (79.98\% \text{ of } 750.08) \div 15.12 + ? = 428.09$$

A) 43

B) 123

C) 246`

D) 372

E) 423

प्रश्न 12: मिश्रण 'A' में 80% एसीटोन और शेष 32 litres पानी है। मिश्रण 'B' में 72 litres एसीटोन और शेष 55% पानी है। जब दो मिश्रणों को मिलाया जाता है, तो परिणामी मिश्रण में एसीटोन और पानी का अनुपात ज्ञात कीजिए।

A) 2:1

B) 6:5

C) 5:3

D) 3:2

E) 4:3

प्रश्न 13: Ravish एक काम को पूरा करने में 32 दिन लेता है जबकि Arnab उसी काम को Ravish से 12 दिन कम में पूरा कर सकता है। यदि Varun काम का 25% 12 दिनों में पूरा कर सकता है, तो Ravish, Arnab और Varun द्वारा साथ में काम का 61.25% पूरा करने में लगने वाला समय ज्ञात कीजिए।

A) 9 days

B) 4 days

C) 8 days

D) 12 days

E) 6 days

प्रश्न 14: दो पासे एक साथ उछाले गए। दोनों पासों पर प्राप्त संख्याओं का योग एक अभाज्य संख्या होने की प्रायिकता ज्ञात कीजिए।

- A) 5/12
- B) 3/8
- C) 4/9
- D) 1/8
- E) 2/9

प्रश्न 15: एक कुत्ता मेंढक की हर 4 छलांग पर 5 छलांग लगाता है। यदि कुत्ते की 1 छलांग मेंढक की 2 छलांग के बराबर है, तो कुत्ते की गति और मेंढक की गति का अनुपात ज्ञात कीजिए।

- A) 7:5
- B) 9:4
- C) 3:1
- D) 5:2
- E) 7:2

प्रश्न 16: Anderson 12 km/hr की औसत गति से साइकिल चला रहा है ताकि वह दोपहर 12 बजे एक निश्चित बिंदु तक पहुंच सके। यदि वह 20 km/hr की गति से साइकिल चलाता है, तो वह सुबह 10 बजे गंतव्य पर पहुंच जाएगा। 11 बजे गंतव्य तक पहुंचने के लिए उसे कितनी गति से साइकिल चलानी चाहिए।

- A) 15 km/hr
- B) 12.5 km/hr
- C) 16.5 km/hr
- D) 16 km/hr
- E) 14 km/hr

प्रश्न 17: एक बेलन का वक्र पृष्ठीय क्षेत्रफल, जिसकी आधार की त्रिज्या और ऊँचाई क्रमशः 5:2 के अनुपात में है, 3080 cm² है। यदि एक शंकु के आधार की परिधि बेलन की तुलना में 132 cm कम है, तो शंकु के आधार की त्रिज्या ज्ञात कीजिए।

- A) 7 cm
- B) 21 cm
- C) 35 cm
- D) 28 cm
- E) 14 cm

PRACTICE MOCK

SBI PO 2023

Take a **FREE** Mock Test
Get Your All India Rank

PRACTICE MOCK

प्रश्न 18: एक वस्तु 'A' को Rs. 2800 में बेचकर अर्जित प्रतिशत लाभ उसी वस्तु को Rs. 2200 में बेचने पर हुई हानि प्रतिशत के बराबर है। विक्रय मूल्य ज्ञात कीजिए जब एक अन्य वस्तु 'B', जिसका क्रय मूल्य वस्तु 'A' से Rs. 700 अधिक है, को 15% लाभ पर बेचा जाता है।

- A) Rs. 3680
- B) Rs. 3240
- C) Rs. 3560
- D) Rs. 3450
- E) Rs. 3220

प्रश्न 19: जब Vipul की वर्तमान आयु में से 12 वर्ष घटाया जाता है और प्राप्त परिणाम को 3 से विभाजित किया जाता है, तो उसके भतीजे की वर्तमान आयु प्राप्त होती है। यदि उसके भतीजे की वर्तमान आयु Vipul के पुत्र की वर्तमान आयु से 4 वर्ष कम है जो 16 वर्ष का है, तो Vipul की वर्तमान आयु ज्ञात कीजिए।

- A) 36 years
- B) 54 years
- C) 48 years
- D) 33 years
- E) 51 years

प्रश्न 20: यदि किसी अंकगणितीय श्रेणी के पहले 21 पदों का योग उस अंकगणितीय श्रेणी के पहले 31 पदों के योग के बराबर है, तो उसी अंकगणितीय श्रेणी के पहले 52 पदों का योग ज्ञात कीजिए।

- A) 0
- B) -212
- C) -325
- D) 212
- E) निर्धारित नहीं किया जा सकता

प्रश्न 21: Suman ने 40% लाभ पर एक वस्तु को बेचा। यदि लाभ प्रतिशत संख्यात्मक रूप से क्रय मूल्य के बराबर होता तो अर्जित लाभ 250% अधिक होता। वह राशि ज्ञात करें जिसके लिए Suman ने वास्तविक रूप से वस्तु को बेचा था।

- A) Rs. 164
- B) Rs. 208
- C) Rs. 196
- D) Rs. 224
- E) इनमें से कोई नहीं

प्रश्न 22: 240 metre लंबी ट्रेन 'A' 72 km/hr की गति से चल रही है। ट्रेन 'B' जो कि 360 metre लंबी है, ट्रेन 'A' के विपरीत दिशा में 108 km/h की गति से चल रही है। कितने समय के लिए, बड़ी ट्रेन से छोटी ट्रेन पूरी तरह से ढक जाती है?

- A) 2.4 seconds
- B) 5.6 seconds
- C) 3.2 seconds
- D) 1.8 seconds
- E) इनमें से कोई नहीं

प्रश्न 23: एक कक्षा के तीन sections A, B और C में कुल 300 छात्र हैं। तीनों sections के छात्रों के औसत अंक 90.7 थे। section B और C के छात्रों का औसत अंक 92.5 था और section A के छात्रों का औसत अंक 88 था। Section B और C में छात्रों की संख्या का अनुपात क्रमशः 5: 4 है। Section B में छात्रों की संख्या ज्ञात करें?

- A) 80
- B) 100
- C) 120
- D) 60
- E) इनमें से कोई नहीं

प्रश्न 24: एक ट्रेन 20.5 seconds में 148 metres लंबे प्लेटफार्म को जबकि 192.8 metres लंबी सुरंग को 23.3 seconds में पार कर सकती है। उस व्यक्ति को पार करने में ट्रेन द्वारा लगने वाले समय ज्ञात करें जो 28.8 km/h की दर से ट्रेन की ओर आ रहा है |

- A) 7.5 seconds
- B) 6.5 seconds
- C) 9.5 seconds
- D) 8.5 seconds
- E) 12.5 seconds

PRACTICE MOCK

प्रश्न 25: निम्नलिखित संख्या एक श्रृंखला बनाती है। विषम का चुनाव करें?

114, 138, 98, 154, 82, 172

- A) 138
- B) 98
- C) 82
- D) 114
- E) 172

प्रश्न 26: निम्नलिखित संख्या एक श्रृंखला बनाती है। विषम का चुनाव करें?

8, 19, 61, 249, 1251, 7517

- A) 19
- B) 7517
- C) 249
- D) 1251
- E) 61

प्रश्न 27: निम्नलिखित संख्या एक श्रृंखला बनाती है। विषम का चुनाव करें?

13, 30, 128, 147, 588, 607

- A) 30
- B) 607
- C) 128
- D) 147
- E) 588

प्रश्न 28: निम्नलिखित संख्या एक श्रृंखला बनाती है। विषम का चुनाव करें?

228, 307, 188, 357, 132, 421

- A) 421
- B) 132
- C) 188

PRACTICE MOCK

D) 357

E) 307

प्रश्न 29: निम्नलिखित संख्या एक श्रृंखला बनाती है। विषम का चुनाव करें?

13, 21, 32, 46, 63, 85

A) 21

B) 85

C) 46

D) 63

E) 32

प्रश्न 30: निम्नलिखित संख्या एक श्रृंखला बनाती है। विषम का चुनाव करें?

132, 148, 196, 276, 378, 532

A) 276

B) 532

C) 378

D) 148

E) 196

निर्देश: नीचे दी गई जानकारी के आधार पर प्रश्नों के उत्तर दें।

एक दुकानदार सप्ताह के विभिन्न दिनों में दो प्रकार के shawls बेचता है यानि Pashmina और Knit। नीचे दी गई तालिका में दुकानदार द्वारा बेची गई shawls की कुल संख्या, और बेचे गए Pashmina और Knit shawls की संख्या का अनुपात दिखाया गया है।

Days	Total number of shawls sold	Ratio of number of Pashmina to Knit shawls sold
Monday	1200	8:7
Tuesday	1440	7:5
Thursday	1080	5:4
Wednesday	1280	9:7
Friday	1620	4:5

प्रश्न 31: Monday को बेची गई Pashmina shawls की संख्या और Thursday को बेची गई Knit shawls की संख्या का अनुपात ज्ञात करें?

- A) 2:3
- B) 4:3
- C) 3:1
- D) 5:4
- E) इनमें से कोई नहीं

प्रश्न 32: Thursday को छोड़कर दिए गए दिनों में दुकानदार द्वारा बेचे गए shawls की संख्या का औसत कितना है?

- A) 1395
- B) 1375
- C) 1385
- D) 1345
- E) इनमें से कोई नहीं

प्रश्न 33: Tuesday को बेची गई Pashmina shawls की संख्या Wednesday को बेची गई Knit shawls की संख्या से कितने प्रतिशत अधिक / कम है?

- A) 70%
- B) 50%
- C) 75%
- D) 60%
- E) इनमें से कोई नहीं

प्रश्न 34: Thursday को बेची गई Pashmina shawls की संख्या और Friday को बेचे जाने वाले Knit shawls के बीच का अंतर ज्ञात करें?

- A) 280
- B) 320
- C) 300
- D) 400
- E) इनमें से कोई नहीं

प्रश्न 35: Saturday को बेची गई Pashmina और Knit shawls की संख्या Friday और Tuesday को बेची गई Pashmina और Knit shawls की संख्या से 25% अधिक और 20% अधिक है। Saturday को बेचे गए shawls की कुल संख्या है:

- A) 1600
 B) 1640
 C) 1480
 D) 1520
 E) इनमें से कोई नहीं

SBI PO 2023

Take a **FREE** Mock Test
 Get Your All India Rank

PRACTICE MOCK

ANSWER KEYS and SOLUTIONS:

1) - A)	2) - B)	3) - C)	4) - A)	5) - A)	6) - D)
7) - E)	8) - D)	9) - B)	10) - A)	11) - B)	12) - C)
13) - E)	14) - A)	15) - D)	16) - A)	17) - E)	18) - A)
19) - C)	20) - A)	21) - C)	22) - A)	23) - B)	24) - A)
25) - E)	26) - B)	27) - A)	28) - E)	29) - B)	30) - C)
31) - B)	32) - C)	33) - B)	34) - C)	35) - E)	

Solution 1: A)

Let the total number of books issued on Tuesday be 'x'.

$$\text{So, } (17 - 12)\% \text{ of } x = 30$$

$$5\% \text{ of } x = 30$$

$$x = 600$$

Number of books issued to 3rd year student on Tuesday = 35% of 600 = 210

Number of books issued to 3rd year student on Monday = 210 × 1.5 = 315

Hence, option a.

Solution 2: B)

Let the total number of books issued on Tuesday be 'x'.

$$\text{So, } (17 - 12)\% \text{ of } x = 30$$

$$5\% \text{ of } x = 30$$

$$x = 600$$

Number of books issued to 4th year student on Tuesday = 23% of 600 = 138

Number of books issued to 5th year student on Tuesday = 13% of 600 = 78

Required percentage = $78/138 \times 100 \sim 56.5\%$

Hence, option b.

Solution 3: C)

Let the total number of books issued on Tuesday be 'x'.

So, $(17 - 12)\%$ of $x = 30$

5% of $x = 30$

$x = 600$

Number of books already issued = 2400

Number of books issued on Monday = 40% of $(6400 - 2400) = 1600$

Number of books issued on Tuesday = 600

So, number of books issued till Tuesday = $2400 + 1600 + 600 = 4600$

Hence, option c.

Solution 4: A)

Let the total number of books issued on Tuesday be 'x'.

So, $(17 - 12)\%$ of $x = 30$

5% of $x = 30$

$x = 600$

Number of books already issued = 2400

Number of books issued on Monday = 40% of $(6400 - 2400) = 1600$

Number of books issued on Tuesday = 600

Number of books deposited till Tuesday = 20% of 4600 = 920

Number of books left in the library = $6400 - 4600 + 920 - 720 = 2000$

Hence, option a.

Solution 5: A)

PRACTICE MOCK

Let the total number of books issued on Tuesday be 'x'.

$$\text{So, } (17 - 12)\% \text{ of } x = 30$$

$$5\% \text{ of } x = 30$$

$$x = 600$$

$$\text{Number of books issued to 5}^{\text{th}} \text{ year student on Tuesday} = 13\% \text{ of } 600 = 78$$

$$\text{Number of 5}^{\text{th}} \text{ year students who were issued books on Tuesday} = 78/3 = 26$$

Hence, option a.

Solution 6: D)

$$782.85^{1/2} + 37.505\% \text{ of } 2688.04 + 48.12 \times 34.25 \div (67.78) = ?$$

$$? \sim 784^{1/2} + 37.5\% \text{ of } 2688 + 48 \times 34 \div 68$$

$$? \sim 28 + 1008 + 24$$

$$? \sim 1060$$

Hence, option d.

Solution 7: E)

$$116.89 + 286.03 + 128.89 - 50\% \text{ of } 960.09 = 64.89\% \text{ of } ?$$

$$65\% \text{ of } ? \sim 117 + 286 + 129 - 50\% \text{ of } 960$$

$$65\% \text{ of } ? \sim 532 - 480$$

$$65\% \text{ of } ? \sim 52$$

$$(13/20) \times ? \sim 52$$

$$? \sim 80$$

Hence, option e.

Solution 8: D)

$$\{1244.9547 + 3.03 \times 1086.98 - (320.97 \times 11.0543)\} = ?$$

$$\{1245 + 3 \times 1087 - (321 \times 11)\} \sim ?$$

$$(1245 + 3261 - 3531) \sim ?$$

$$? \sim 975$$

PRACTICE MOCK

Hence, option d.

Solution 9: B)

$$(75.04\% \text{ of } 839.95 - 15.92 \times 15.13) = ? \times 26.09$$

$$(75\% \text{ of } 840 - 16 \times 15) \sim ? \times 26$$

$$(630 - 240) = ? \times 26$$

$$390 = ? \times 26$$

$$? \sim 15$$

Hence, option b.

Solution 10: A)

$$62.45\% \text{ of } 3200.09 + 40.12\% \text{ of } ? = 2095.94$$

$$62.5\% \text{ of } 3200 + 40\% \text{ of } ? \sim 2096$$

$$0.625 \times 3200 + 0.4 \times ? \sim 2096$$

$$2000 + 0.4 \times ? \sim 2096$$

$$0.4 \times ? \sim 96$$

$$? \sim 240$$

Hence, option a.

Solution 11: B)

$$265.08 + (79.98\% \text{ of } 750.08) \div 15.12 + ? = 428.09$$

$$265 + (80\% \text{ of } 750) \div 15 + ? \sim 428$$

$$265 + 600 \div 15 + ? \sim 428$$

$$265 + 40 + ? \sim 428$$

$$305 + ? \sim 428$$

$$? \sim 123$$

Hence, option b.

Solution 12: C)

Quantity of water in mixture 'A' = 32 litres

Total quantity of mixture 'A' = $32/0.2 = 160$ litres

Therefore, quantity of acetone in mixture 'A' = $160 - 32 = 128$ litres

Quantity of acetone in mixture 'B' = 72 litres

Total quantity of mixture 'B' = $72/0.45 = 160$ litres

Quantity of water in mixture 'B' = $160 - 72 = 88$ litres

Therefore, quantity of acetone in resultant mixture = $128 + 72 = 200$ litres

Quantity of water in resultant mixture = $32 + 88 = 120$ litres

Required ratio = $200:120 = 5:3$

Hence, option c.

Solution 13: E)

Time taken by Ravish to complete the work = 32 days

Time taken by Arnab to complete to the work = $32 - 12 = 20$ days

Time taken by Varun to complete the work = $12/0.25 = 48$ days

Let the total work = 480 units

Efficiency of Ravish = $480/32 = 15$ units/day

Efficiency of Arnab = $480/20 = 24$ units/day

Efficiency of Varun = $480/48 = 10$ units/day

Therefore, 1 days work of (Varun + Ravish + Arnab) = $15 + 24 + 10 = 49$ units

Therefore, required time taken = $0.6125 \times 480/49 = 6$ days

Hence, option e.

SBI PO 2023

Take a **FREE** Mock Test
Get Your All India Rank

PRACTICE MOCK

Solution 14: A)

Total number of outcomes = $6 \times 6 = 36$

Events of getting a sum which is a prime number = $\{(1, 1), (1, 2), (1, 4), (1, 6), (2, 1), (2, 3), (2, 5), (3, 2), (3, 4), (4, 1), (4, 3), (5, 2), (5, 6), (6, 1), (6, 5)\} = 15$

Required probability = Number of favourable outcomes/total number of outcomes

Or, required probability = $15/36 = 5/12$

Hence, option a.

Solution 15: D)

According to the question,

1 leap of dog = 2 leaps of frog

Therefore, 5 leap of dog = $5 \times 2 = 10$ leaps of the frog

Therefore, ratio of speed of the dog to the speed of the frog = $10:4 = 5:2$

Hence, option d.

Solution 16: A)

Let the distance to be travelled be 'x' km

Time taken when speed is 12 km/hr = $(x/12)$ hours

Time taken when speed is 20 km/hr = $(x/20)$ hours

According to the question,

$$(x/12) - (x/20) = 2$$

$$\text{Or, } 5x - 3x = 2 \times 60$$

$$\text{Or, } 2x = 120$$

$$\text{Or, } x = 60 \text{ km}$$

Time taken to travel 60 km with speed of 12 km/hr = $60/12 = 5$ hours

Therefore, he started at $12 - 5 = 7$ a.m.

Therefore, required speed to reach the destination at 11 a.m. or 4 hours = $60/4 = 15$ km/hr

Hence, option a.

Solution 17: E)

Let the radius of the base and the height of the cylinder be 5x cm and 2x cm, respectively

According to the question,

$$2\pi rh = 3080$$

PRACTICE MOCK

$$2 \times (22/7) \times 5x \times 2x = 3080$$

$$\text{Or, } x^2 = 3080 \times (7/440) = 49$$

$$\text{Or, } x = 7$$

Therefore, radius of the base of the cylinder = $5x = 35$ cm

$$\text{Circumference of the base of the cone} = \{2 \times (22/7) \times 35\} - 132 = 88 \text{ cm}$$

Let the radius of the base of the cone be 'r' cm

$$\text{Therefore, } 2\pi r = 88$$

$$\text{Or, } 2 \times (22/7) \times r = 88$$

$$\text{Or, } r = (88/44) \times 7$$

$$\text{Or, } r = 14 \text{ cm}$$

Hence, option e.

Solution 18: A)

Let the cost price of the article 'A' be Rs. x

$$\text{Therefore, profit percent} = \{(2800 - x)/x\} \times 100$$

$$\text{And, loss percent incurred} = \{(x - 2200)/x\} \times 100$$

According to the question,

$$\{(2800 - x)/x\} \times 100 = \{(x - 2200)/x\} \times 100$$

$$\text{Or, } 2800 - x = x - 2200$$

$$\text{Or, } 2x = 5000$$

$$\text{Or, } x = 2500$$

Therefore, cost price of article 'B' = $2500 + 700 = \text{Rs. } 3200$

Therefore, required selling price of article 'B' = $1.15 \times 3200 = \text{Rs. } 3680$

Hence, option a.

SBI PO 2023

Take a **FREE** Mock Test
Get Your All India Rank

PRACTICE MOCK

Solution 19: C)

Let the Present age of Vipul be 'x' years

Present age of his nephew = $16 - 4 = 12$ years

Therefore,

$$\{(x - 12)/3\} = 12$$

$$\text{Or, } x - 12 = 36$$

$$\text{Or, } x = 48$$

Therefore, present age of Vipul = 48 years

Hence, option c.

Solution 20: A)

Let the 1st term and common difference of the AP be 'a' and 'd', respectively

Sum of n terms i.e. S_n of an AP = $(n/2)\{2a + (n - 1)d\}$

$$S_{21} = (21/2)(2a + 20d)$$

$$S_{31} = (31/2)(2a + 30d)$$

According to the question,

$$(21/2)(2a + 20d) = (31/2)(2a + 30d)$$

$$\text{Or, } 42a + 420d = 62a + 930d$$

$$\text{Or, } 20a = -510d$$

$$\text{Or, } a = -25.5d$$

Therefore, sum of 1st 52 terms of the AP = $(52/2)\{2 \times (-25.5)d + (52 - 1)d\} = 26(-51d + 51d) = 0$

Hence, option a.

Solution 21: C)

Let the cost price of the article be Rs. $100x$

Therefore, selling price of article = Rs. $140x$

Therefore, profit earned = $140x - 100x = \text{Rs. } 40x$

$$\text{New profit} = 3.5 \times 40x = \text{Rs. } 140x$$

According to the question,

$$(140x/100x) \times 100 = 100x$$

$$\text{Or, } x = 1.4$$

Therefore, amount for which Suman sold the article, originally = $140x = \text{Rs. } 196$

Hence, option c.

Solution 22: A)

Length of smaller train = 240 metre

$$\text{Speed of smaller train} = 72 \times (5/18) = 20 \text{ m/s}$$

Length of larger train = 360 metres

$$\text{Speed of larger train} = 108 \times (5/18) = 30 \text{ m/s}$$

Since, the smaller train is completely obscured by larger train, therefore, extra length of larger train = $360 - 240 = 120$ metres

$$\text{Relative speed of trains 'A' and 'B'} = 30 + 20 = 50 \text{ m/s}$$

$$\text{Required time} = 120/50 = 2.4 \text{ seconds}$$

Hence, option a.

Solution 23: B)

Let number of students in section A be 'x'

Number of students in section B and C together = $300 - x$

According to question;

$$88x + 92.5 \times (300 - x) = 90.7 \times 300$$

$$88x + 27750 - 92.5x = 27210$$

$$4.5x = 540$$

$$x = 120$$

Number of students in sections B and C together = $300 - 120 = 180$

Number of students in section B = $5/9 \times 180 = 100$

Hence, option b.

Solution 24: A)

Let speed of train is 's' km/h and length of train is 'l' metres.

$$\text{So, } l + 148 = 20.5s \dots\dots\dots(1)$$

$$\text{And, } l + 192.8 = 23.3s \dots\dots\dots(2)$$

Equation (2) – Equation (1), we get

$$44.8 = 2.8s$$

$$\text{Or, } s = 16$$

$$\text{Length of train} = l = 20.5 \times 16 - 148 = 180 \text{ metres}$$

$$\text{Speed of man} = 28.8 \times 5/18 = 8 \text{ m/s}$$

$$\text{Desired time} = 180/(16 + 8) = 7.5 \text{ seconds}$$

Hence, option a.

Solution 25: E)

$$114 + 8 \times 3 = 138$$

$$138 - 8 \times 5 = 98$$

$$98 + 8 \times 7 = 154$$

$$154 - 8 \times 9 = 82$$

$$\mathbf{82 + 8 \times 11 = 170}$$

Therefore, 170 should come in place of 172.

Hence, option e.

Solution 26: B)

$$8 \times 2 + 3 = 19$$

$$19 \times 3 + 4 = 61$$

$$61 \times 4 + 5 = 249$$

$$249 \times 5 + 6 = 1251$$

$$\mathbf{1251 \times 6 + 7 = 7513}$$

Therefore, 7513 should come in place of 7517.

Hence, option b.

SBI PO 2023**Take a FREE Mock Test**
Get Your All India RankPRACTICE **MOCK****Solution 27: A)**

$$13 + 19 = 32$$

$$32 \times 4 = 128$$

$$128 + 19 = 147$$

$$147 \times 4 = 588$$

$$588 + 19 = 607$$

Therefore, 32 should come in place of 30.

Hence, option a.

Solution 28: E)

$$228 + 9^2 = 309$$

$$309 - 11^2 = 188$$

$$188 + 13^2 = 357$$

$$357 - 15^2 = 132$$

$$132 + 17^2 = 421$$

Therefore, 309 should come in place of 307.

Hence, option e.

Solution 29: B)

$$13 + 8 = 21$$

$$21 + 11 = 32$$

$$32 + 14 = 46$$

$$46 + 17 = 63$$

$$63 + 20 = 83$$

PRACTICE MOCK

Therefore, 83 should come in place of 85.

Hence, option b.

Solution 30: C)

$$132 + 16 \times 1 = 148$$

$$148 + 16 \times 3 = 196$$

$$196 + 16 \times 5 = 276$$

$$276 + 16 \times 7 = 388$$

$$388 + 16 \times 9 = 532$$

So, 388 should come in place of 378.

Hence, option c.

Solution 31: B)

Days	Number of Pashmina shawls sold	Number of Knit shawls sold
Monday	$8/15 \times 1200 = 640$	$7/15 \times 1200 = 560$
Tuesday	$7/12 \times 1440 = 840$	$5/12 \times 1440 = 600$
Wednesday	$9/16 \times 1280 = 720$	$7/16 \times 1280 = 560$
Thursday	$5/9 \times 1080 = 600$	$4/9 \times 1080 = 480$
Friday	$4/9 \times 1620 = 720$	$5/9 \times 1620 = 900$

$$\text{Desired ratio} = 640:480 = 4:3$$

Hence, option b.

Solution 32: C)

$$\text{Desired Average} = (1200 + 1440 + 1280 + 1620)/4 = 1385$$

Hence, option c.

Solution 33: B)

$$\text{Desired Percentage} = [(840 - 560)/560] \times 100 = 50\%$$

Hence, option b.

Solution 34: C)

$$\text{Desired difference} = 900 - 600 = 300$$

Hence, option c.

Solution 35: E)

Total number of shawls sold on Saturday = $1.25 \times 720 + 1.20 \times 600 = 900 + 720 = 1620$

Hence, option e.

SBI PO Previous Year Questions – English

Question 1: In the following question, one part of the sentence may have an error. Find out which part of the sentence has an error and select the appropriate option. If the sentence is free from error, select 'No Error'.

- A) North Korea, which also has
- B) dozens of nuclear weapons,
- C) signed that treaty in 1985
- D) but withdraws in 2003.
- E) No error

Question 2: In the following question, one part of the sentence may have an error. Find out which part of the sentence has an error and select the appropriate option. If the sentence is free from error, select 'No Error'.

- A) Both Russia and the U.S. have thousands
- B) of nuclear weapons, most of which are five or more times
- C) more powerful than the atomic bombs
- D) that leveled Hiroshima and Nagasaki in 1945.
- E) No error

Question 3: In the following question, one part of the sentence may have an error. Find out which part of the sentence has an error and select the appropriate option. If the sentence is free from error, select 'No Error'.

- A) Labour migration is always
- B) accompany by a dichotomy
- C) between economic benefits
- D) and social consequences.
- E) No error

Question 4: In the following question, one part of the sentence may have an error. Find out which part of the sentence has an error and select the appropriate option. If the sentence is free from error, select 'No Error'.

- A) Despite the negative
- B) public attitude to women's labour
- C) migration, it helps much women
- D) to gain financial independence.
- E) No error

Question 5: In the following question, one part of the sentence may have an error. Find out which part of the sentence has an error and select the appropriate option. If the sentence is free from error, select 'No Error'.

- A) With this decision, nine judges
- B) made it possible for the country
- C) to institutionalize peace after
- D) 50 years of internally conflict.
- E) No error

Question 6: In the following question, a sentence is given with three words highlighted in bold. From the options, choose the one that provides the correct arrangement of words in the sentence.

The Supreme Court said that the farmers have a constitutional right to **(A) continue** with their protests as long as their **(B) descend** did not **(C) dissent** into violence.

- A) ACB
- B) BCA
- C) BAC
- D) CBA
- E) None of the above

Question 7: In the following question, a sentence is given with three words highlighted in bold. From the options, choose the one that provides the correct arrangement of words in the sentence.

Whether one is a driver or a passenger, the **(A) maddening** Indian road experience is **(B) typical** and **(C) exhausting**, and bad for both mental and physical health.

- A) ACB
- B) CAB
- C) BAC
- D) CBA

E) None of the above

Question 8: In the following question, a sentence is given with three words highlighted in bold. From the options, choose the one that provides the correct arrangement of words in the sentence.

There are many **(A) manpower** where India has an advantage because of relatively lower costs of all **(B) forms** of **(C) industries** - whether it is professional or factory labour.

A) ACB

B) BCA

C) BAC

D) CBA

E) None of the above

Question 9: In the given question, a word has been given and there are three ways in which the word has been used, in similar or different forms. You need to see which of the sentences have correctly used the highlighted word, and mark that as your answer.

Drive

1. The earth's dwindling koala numbers cannot be attributed to a single **driving** factor.
2. Said to possess exceptional **drive** and extreme intelligence, Norton's ambitions were not satisfied with the success.
3. When you **drive** into the city, you see clothes hanging out of virtually every window in the dorms.

A) Only 3

B) Only 1 and 2

C) Only 1 and 3

D) Only 2 and 3

E) All 1, 2 and 3

Question 10: In the given question, a word has been given and there are three ways in which the word has been used, in similar or different forms. You need to see which of the sentences have correctly used the highlighted word, and mark that as your answer.

Order

1. Nelson acted to put an end to the bloodshed, using his ships and men to restore **order** in the city.
2. International free trade improved the country and in **order** for Americans to prosper from a strong economy they had no choice but to embrace it.

3. During the battle, Wellesley led his men against the enemy and gave the **order** to fire.

- A) Only 3
- B) Only 1 and 2
- C) Only 1 and 3
- D) Only 2 and 3
- E) All 1, 2 and 3

Question 11: In the given question, a word has been given and there are three ways in which the word has been used, in similar or different forms. You need to see which of the sentences have correctly used the highlighted word, and mark that as your answer.

Tend

1. The teachers at this school **tend** to force-feed their students information, rather than encourage critical thinking and debate.
2. This was considered a custom of the time, and was quite common for households to take in wounded soldiers and **tend** to them.
3. Very little money will be left over for farmers who **tend** to apply for the schemes this year.

- A) Only 1
- B) Only 1 and 2
- C) Only 1 and 3
- D) Only 2 and 3
- E) All 1, 2 and 3

Question 12: In the given question, a word has been given and there are three ways in which the word has been used, in similar or different forms. You need to see which of the sentences have correctly used the highlighted word, and mark that as your answer.

Settle

1. The dentist told Shubham to **settle** back in the chair.
2. The pudding offers consumers a **settle** vanilla taste combined with a smooth texture.
3. While the company's decision may **settle** one problem, it appears that it may have created a host of others.

- A) Only 1 and 2
- B) Only 1 and 3

- C) Only 1
- D) Only 2 and 3
- E) All 1, 2 and 3

Question 13: In the following question, a sentence is given with a phrase or idiom highlighted in bold. Select the option given below that can replace the highlighted phrase and mark that as your answer.

At fishing shards of a bacterial DNA from the teeth of bodies in a cemetery, researchers found the starting point of the plague that devastated Eurasia.

- A) At verifying
- B) At hunting
- C) In looking after
- D) On investigating
- E) No improvement

Question 14: In the following question, a sentence is given with a phrase or idiom highlighted in bold. Select the option given below that can replace the highlighted phrase and mark that as your answer.

When the remaining miles **are loomed** large, the Gratitude Mile mindset tweak can motivate us to finish strong.

- A) has brewed
- B) are intimidating
- C) are materialised
- D) are hovering
- E) No improvement

Question 15: In the following question, a sentence is given with a phrase or idiom highlighted in bold. Select the option given below that can replace the highlighted phrase and mark that as your answer.

A powerful tremor in Afghanistan has killed more than 1000 people and the death toll is likely **to escalating** manifold.

- A) to be inflating
- B) to be soar
- C) to shoot up
- D) to enlarging
- E) No improvement

Question 16: In the following question, a sentence is given with a phrase or idiom highlighted in bold. Select the option given below that can replace the highlighted phrase and mark that as your answer.

In the quest for self-improvement, it's tempting **to hope on** the latest wellness fad.

- A) in diving
- B) to jump on
- C) to plunge
- D) in mounting
- E) No improvement

Directions: In the following passage, some of the words have been left out and replaced by a blank represented by a letter. First read the passage and try to understand what it is about. Then fill in the blanks as per the questions given.

While large-scale infrastructure development is presented as a ___(A)___ for economic development and reducing poverty in developing countries, such projects pose ___(B)___ risks for local communities living along the river - and for the environment at large. If built, the Salween dams will not only alter the river's ecosystems and their monsoonal water-level fluctuations, but also transform a wide range of agricultural landscapes that local communities ___(C)___ on for their livelihoods. In recent years, ___(D)___ concerns over hydro-electric projects, international financial entities, such as the International Finance Corporation (IFC), have started to focus on ___(E)___ the idea of sustainable hydropower.

Question 17: (A)

- A) summit
- B) yield
- C) means
- D) dearth
- E) boon

Question 18: (B)

- A) inane
- B) informed
- C) fragile
- D) considerable
- E) keen

Question 19: (C)

- A) depend
- B) commend
- C) announce
- D) detach
- E) repeal

SBI PO 2023**Take a FREE Mock Test
Get Your All India Rank**

PRACTICE MOCK

Question 20: (D)

- A) against
- B) amid
- C) towards
- D) along
- E) for

Question 21: (E)

- A) aligning
- B) reviving
- C) offending
- D) hoarding
- E) promoting

Directions: Read the following passage carefully and answer the questions that follow.

It is fairly easy to identify an urban area when we see one; however, it is far more complex to determine what an urban area is. Is urban a characteristic of a place or its people? Is it only based on factors like the population size, land surface, primary occupation and the level of development? Does the "urban" area have a culture of its own?

While an urban area is a function of all these metrics, the definitional ambiguity remains a complex task. It is not only necessary to define "urban" in order to understand urbanisation but also to understand the rural-urban divide. This is all the more important in the context of in situ urbanisation, where non-agricultural opportunities are promoted in rural areas, and economic linkages are strengthened. With almost 55 per cent of the population living in cities now and nearly 70 per cent projected to be living in cities by 2050, the attention toward understanding urban settings has never been more glaring. Accompanied with population growth, demographic transition and

technological advances, the multi-faceted setting that make up cities have acquired deep academic interests. The rapid rise of cities in developed economies dates back to 200 years, although it is much more recent in developing economies. Searching for a precise definition of “urban” also emphasises the lack of a dichotomy between rural and urban regions. The lines between rural and urban spaces are not as clear as one might think, thereby urging for a definition. For instance, a rural area would have been classified as urban if the streets were laid out in a grid. Such clear transitions are hard to find today. Besides, living in rural areas does not mean exclusion from urban life. The processes of integrative development have meant that rural and urban areas have become more a part of a continuum than a dichotomy. Among the Scandinavian countries, rural and urban spaces are classified on the basis of each other. For example, population density and distance from urban centres are seen as the criteria to define rural areas. In Denmark, which has close to 88 per cent of the population living in cities, there are three classes of rural areas with distinctions between urban-adjacent, intermediate and remote rural areas and a further classification system that compiles the socio-economic profiles of its municipalities.

The Census of 2011 revealed a decline in India’s rural population for the first time. Cities like Bengaluru that have emerged as innovation hubs have grown between 2001 and 2011, **subsuming** many non-urban areas. This is only expected to grow with the next Census. According to the census definition, a habitation is classified as urban if it has a population of at least 5,000 people, at least 75 per cent of the male working population is employed in non-agricultural pursuits, and the population density is at least 400 people per square kilometre. These are also called Census Towns. The 73rd and 74th Constitutional Amendments also enshrine the categorisation of areas into district, intermediate level, and village, as well as the creation of municipalities. The demographic and other criteria determining which sort of municipality is formed vary greatly from state to state. As a result, it is up to the state legislatures to select which municipality will be formed for each urban area.

The variations in determining what can be classified as cities are as **dynamic** as cities themselves. An urban area’s distinguishing characteristics are tied to its strategic role in the larger community, its value as a civilising force, and its role in enabling the market. However, this does not limit the potential of urban areas, especially in more developed countries where improved mobility has allowed urban inhabitants to live outside the city. The fact that urban population growth happens outside the continually built-up region is commonly acknowledged in various census definitions. The growth of the functional urban region has meant that only the most geographically isolated locations are outside the impact of a metropolis in the more heavily urbanised advanced economies — for example, the Netherlands and the United Kingdom. This aspect of urbanisation not only produces demographic transitions but also alters the relationship of populations with their environment. Settling in urban spaces triggers an image of cemented buildings towering high in the sky as if they were to pierce it. In contrast, rural life is seen as akin to little houses on a prairie. While this does not hold true anymore, it colours our perception of the “urban”.

Question 22: According to the passage, when can a rural area be classified as an urban area?

- A) If it brings urban facilities to traditionally agricultural communities.
- B) If it is excluded from urban life.
- C) If the population density is low.
- D) If the streets were laid out in a grid.
- E) It can never be classified as an urban area.

Question 23: According to the passage, which of the following statements is/are correct?

- A) There has been a rapid development of cities in developed countries in recent years.
- B) There are two classes of rural areas in Denmark.

- C) The definition of urban area is ambiguous.
- D) Among the Scandinavian countries, rural and urban areas cannot be classified on the basis of each other.
- E) Nearly 70 percent of the population live in cities now.

Question 24: Which of the following is a criterion used for determining whether a habitation is a 'census town'?

- A) One which has at least 5000 male population
- B) One in which the population density is at least 400 people per square metre
- C) One in which at least 75 percent male working population is employed in agricultural pursuits
- D) One which has emerged as an innovation hub
- E) None of the above

Question 25: The urban area's distinguishing characteristics are linked to:

- A) Its role in enabling the market
- B) Its role in improving mobility
- C) Its role in creating demographic transitions
- D) Its growing population
- E) Both (a) and (b)

Question 26: Which of the following is closest in meaning to the word '**dynamic**' as used in the passage?

- A) fluid
- B) haggard
- C) languid
- D) bereft
- E) stoic

Question 27: Which of the following is opposite in meaning to the word '**subsuming**' as used in the passage?

- A) embracing
- B) comprehending
- C) entailing
- D) denying

E) comprising

Question 28: In the question below, a sentence is given with four words highlighted in bold. From the options, choose the pair of words that need to be interchanged to make the sentence grammatically and meaningfully correct.

Market forces have so far been **moving** the **help** in the right direction, now it's time government **stepped** in to **sector**.

A) moving → help

B) moving → stepped

C) help → sector

D) stepped → sector

E) No interchange required

Question 29: In the question below, a sentence is given with four words highlighted in bold. From the options, choose the pair of words that need to be interchanged to make the sentence grammatically and meaningfully correct.

We are **heading** into a post-antibiotic **era**, where **common** infections could once again be **deadly**.

A) heading → common

B) era → common

C) era → deadly

D) common → deadly

E) No interchange required

Question 30: In the question below, a sentence is given with four words highlighted in bold. From the options, choose the pair of words that need to be interchanged to make the sentence grammatically and meaningfully correct.

We are **failing** to **forced** infections, and patients are **treat** to stay longer in care facilities to **overcome** them.

A) failing → forced

B) forced → treat

C) forced → overcome

D) treat → overcome

E) No interchange required

प्रश्न 1: None

- A) North Korea, which also has
- B) dozens of nuclear weapons,
- C) signed that treaty in 1985
- D) but withdraws in 2003.
- E) No error

प्रश्न 2: None

- A) Both Russia and the U.S. have thousands
- B) of nuclear weapons, most of which are five or more times
- C) more powerful than the atomic bombs
- D) that leveled Hiroshima and Nagasaki in 1945.
- E) No error

प्रश्न 3: None

- A) Labour migration is always
- B) accompany by a dichotomy
- C) between economic benefits
- D) and social consequences.
- E) No error

प्रश्न 4: None

- A) Despite the negative
- B) public attitude to women's labour
- C) migration, it helps much women
- D) to gain financial independence.
- E) No error

प्रश्न 5: None

- A) With this decision, nine judges
- B) made it possible for the country

PRACTICE MOCK

- C) to institutionalize peace after
- D) 50 years of internally conflict.
- E) No error

प्रश्न 6: None

- A) ACB
- B) BCA
- C) BAC
- D) CBA
- E) None of the above

प्रश्न 7: None

- A) ACB
- B) CAB
- C) BAC
- D) CBA
- E) None of the above

प्रश्न 8: None

- A) ACB
- B) BCA
- C) BAC
- D) CBA
- E) None of the above

प्रश्न 9: None

- A) Only 3
- B) Only 1 and 2
- C) Only 1 and 3
- D) Only 2 and 3

PRACTICE MOCK

E) All 1, 2 and 3

SBI PO 2023

Take a **FREE** Mock Test
Get Your All India Rank

PRACTICE MOCK

प्रश्न 10: None

- A) Only 3
- B) Only 1 and 2
- C) Only 1 and 3
- D) Only 2 and 3
- E) All 1, 2 and 3

प्रश्न 11: None

- A) Only 1
- B) Only 1 and 2
- C) Only 1 and 3
- D) Only 2 and 3
- E) All 1, 2 and 3

प्रश्न 12: None

- A) Only 1 and 2
- B) Only 1 and 3
- C) Only 1
- D) Only 2 and 3
- E) All 1, 2 and 3

प्रश्न 13: None

- A) At verifying
- B) At hunting
- C) In looking after

PRACTICE MOCK

D) On investigating

E) No improvement

प्रश्न 14: None

A) has brewed

B) are intimidating

C) are materialised

D) are hovering

E) No improvement

प्रश्न 15: None

A) to be inflating

B) to be soar

C) to shoot up

D) to enlarging

E) No improvement

प्रश्न 16: None

A) in diving

B) to jump on

C) to plunge

D) in mounting

E) No improvement

Directions: In the following passage, some of the words have been left out and replaced by a blank represented by a letter. First read the passage and try to understand what it is about. Then fill in the blanks as per the questions given.

While large-scale infrastructure development is presented as a ___(A)___ for economic development and reducing poverty in developing countries, such projects pose ___(B)___ risks for local communities living along the river - and for the environment at large. If built, the Salween dams will not only alter the river's ecosystems and their monsoonal water-level fluctuations, but also transform a wide range of agricultural landscapes that local communities ___(C)___ on for their livelihoods. In recent years, ___(D)___ concerns over hydro-electric projects, international financial entities, such as the International Finance Corporation (IFC), have started to focus on ___(E)___ the idea of sustainable hydropower.

PRACTICE MOCK

प्रश्न 17: None

- A) summit
- B) yield
- C) means
- D) dearth
- E) boon

प्रश्न 18: None

- A) inane
- B) informed
- C) fragile
- D) considerable
- E) keen

प्रश्न 19: None

- A) depend
- B) commend
- C) announce
- D) detach
- E) repeal

प्रश्न 20: None

- A) against
- B) amid
- C) towards
- D) along
- E) for

प्रश्न 21: None

- A) aligning

PRACTICE MOCK

- B) reviving
- C) offending
- D) hoarding
- E) promoting

Directions: Read the following passage carefully and answer the questions that follow.

It is fairly easy to identify an urban area when we see one; however, it is far more complex to determine what an urban area is. Is urban a characteristic of a place or its people? Is it only based on factors like the population size, land surface, primary occupation and the level of development? Does the “urban” area have a culture of its own?

While an urban area is a function of all these metrics, the definitional ambiguity remains a complex task. It is not only necessary to define “urban” in order to understand urbanisation but also to understand the rural-urban divide. This is all the more important in the context of in situ urbanisation, where non-agricultural opportunities are promoted in rural areas, and economic linkages are strengthened. With almost 55 per cent of the population living in cities now and nearly 70 per cent projected to be living in cities by 2050, the attention toward understanding urban settings has never been more glaring. Accompanied with population growth, demographic transition and technological advances, the multi-faceted setting that make up cities have acquired deep academic interests. The rapid rise of cities in developed economies dates back to 200 years, although it is much more recent in developing economies. Searching for a precise definition of “urban” also emphasises the lack of a dichotomy between rural and urban regions. The lines between rural and urban spaces are not as clear as one might think, thereby urging for a definition. For instance, a rural area would have been classified as urban if the streets were laid out in a grid. Such clear transitions are hard to find today. Besides, living in rural areas does not mean exclusion from urban life. The processes of integrative development have meant that rural and urban areas have become more a part of a continuum than a dichotomy. Among the Scandinavian countries, rural and urban spaces are classified on the basis of each other. For example, population density and distance from urban centres are seen as the criteria to define rural areas. In Denmark, which has close to 88 per cent of the population living in cities, there are three classes of rural areas with distinctions between urban-adjacent, intermediate and remote rural areas and a further classification system that compiles the socio-economic profiles of its municipalities.

The Census of 2011 revealed a decline in India’s rural population for the first time. Cities like Bengaluru that have emerged as innovation hubs have grown between 2001 and 2011, **subsuming** many non-urban areas. This is only expected to grow with the next Census. According to the census definition, a habitation is classified as urban if it has a population of at least 5,000 people, at least 75 per cent of the male working population is employed in non-agricultural pursuits, and the population density is at least 400 people per square kilometre. These are also called Census Towns. The 73rd and 74th Constitutional Amendments also enshrine the categorisation of areas into district, intermediate level, and village, as well as the creation of municipalities. The demographic and other criteria determining which sort of municipality is formed vary greatly from state to state. As a result, it is up to the state legislatures to select which municipality will be formed for each urban area.

The variations in determining what can be classified as cities are as **dynamic** as cities themselves. An urban area’s distinguishing characteristics are tied to its strategic role in the larger community, its value as a civilising force, and its role in enabling the market. However, this does not limit the potential of urban areas, especially in more developed countries where improved mobility has allowed urban inhabitants to live outside the city. The fact that urban population growth happens outside the continually built-up region is commonly acknowledged in various census definitions. The growth of the functional urban region has meant that only the most geographically isolated locations are outside the impact of a metropolis in the more heavily urbanised advanced economies — for example, the Netherlands and the United Kingdom. This aspect of urbanisation not only produces demographic transitions but also alters the relationship of populations with their environment. Settling in urban spaces triggers an image of

cemented buildings towering high in the sky as if they were to pierce it. In contrast, rural life is seen as akin to little houses on a prairie. While this does not hold true anymore, it colours our perception of the “urban”.

प्रश्न 22: None

- A) If it brings urban facilities to traditionally agricultural communities.
- B) If it is excluded from urban life.
- C) If the population density is low.
- D) If the streets were laid out in a grid.
- E) It can never be classified as an urban area.

प्रश्न 23: None

- A) There has been a rapid development of cities in developed countries in recent years.
- B) There are two classes of rural areas in Denmark.
- C) The definition of urban area is ambiguous.
- D) Among the Scandinavian countries, rural and urban areas cannot be classified on the basis of each other.
- E) Nearly 70 percent of the population live in cities now.

प्रश्न 24: None

- A) One which has at least 5000 male population
- B) One in which the population density is at least 400 people per square metre
- C) One in which at least 75 percent male working population is employed in agricultural pursuits
- D) One which has emerged as an innovation hub
- E) None of the above

प्रश्न 25: None

- A) Its role in enabling the market
- B) Its role in improving mobility
- C) Its role in creating demographic transitions
- D) Its growing population
- E) Both (a) and (b)

प्रश्न 26: None

- A) fluid
- B) haggard
- C) languid
- D) bereft
- E) stoic

प्रश्न 27: None

- A) embracing
- B) comprehending
- C) entailing
- D) denying
- E) comprising

प्रश्न 28: None

- A) moving → help
- B) moving → stepped
- C) help → sector
- D) stepped → sector
- E) No interchange required

प्रश्न 29: None

- A) heading → common
- B) era → common
- C) era → deadly
- D) common → deadly
- E) No interchange required

प्रश्न 30: None

- A) failing → forced

PRACTICE MOCK

- B) forced → treat
- C) forced → overcome
- D) treat → overcome
- E) No interchange required

SBI PO 2023

Take a **FREE** Mock Test
Get Your All India Rank

PRACTICE **MOCK****ANSWER KEYS and SOLUTIONS:**

1) - D)	2) - E)	3) - B)	4) - C)	5) - D)	6) - A)
7) - C)	8) - D)	9) - E)	10) - E)	11) - B)	12) - B)
13) - D)	14) - D)	15) - C)	16) - B)	17) - C)	18) - D)
19) - A)	20) - B)	21) - E)	22) - D)	23) - C)	24) - E)
25) - A)	26) - A)	27) - D)	28) - C)	29) - E)	30) - B)

Solution 1: D)

In D, replace the present tense form verb WITHDRAWS with the second form WITHDREW as the sentence talks of a past event that took place in 2003. Thus, D is the right answer.

Solution 2: E)

The sentence is grammatically correct and free of error. Thus, E is the right answer.

Solution 3: B)

In B, replace the base form verb ACCOMPANY with ACCOMPANIED as the passive voice construction IS + VERB will take the past participle form of the verb. Thus, B is the right answer.

Solution 4: C)

In C, replace the adjective MUCH with MANY as the former is used to modify uncountable nouns, while the latter is used to modify countable nouns. Here, WOMEN is countable, so MANY will be used. Thus, C is the right answer.

Solution 5: D)

In D, replace the adverb INTERNALLY with the adjective INTERNAL as it is being used to modify the noun CONFLICT. Thus, D is the right answer.

Solution 6: A)

The sentence tells us how the Supreme Court has said that farmers have the constitutional right to continue (carry on with) their protests provided their dissent (disagreement) does not descend (come down) to violence. ACB is the correct order of the words in the sentence, which will make (a) the right answer.

Solution 7: C)

The sentence tells us that whether one is a driver or a passenger, the typical (usual) Indian road experience is maddening (irritating) and exhausting (tiring) for both mental as well as physical health. BAC is the correct order of the words in the sentence, which will make (c) the right answer.

Solution 8: D)

The sentence tells us that there are many industries (economic activity concerned with the processing of raw materials and manufacture of goods in factories) where India has an edge because of relatively lower costs of all forms (types) of manpower (the number of people working or available for work or service), be it professional or factory labour. CBA is the correct order of the words in the sentence, which will make (d) the right answer.

Solution 9: E)

DRIVE means to operate a vehicle to commute; 3 uses the word to convey how when one enters the city, one can see clothes hanging out of every window in the dorms. DRIVING means having a strong and controlling influence; 1 uses this word to convey how there is no one dominant factor that is causing koala numbers to drop. DRIVE also refers to ambition; 2 uses this word to convey how Norton was very ambitious and not satisfied with the success. Thus, (e) is the right answer.

Solution 10: E)

ORDER means peace and discipline; 1 uses this word to convey how Nelson used his ships and men to restore peace in the city. IN ORDER TO means for the purpose of; 2 uses ORDER as part of this phrase to convey how Americans had to embrace international free trade so that they could prosper from a strong economy. ORDER means command; 3 uses this word to convey how Wellesley gave the command to fire. Thus, (e) is the right answer.

Solution 11: B)

TEND means to be inclined towards; 1 uses the word to convey how the teachers at this school are inclined towards force-feed their students information. TEND means to care for; 2 uses this word to convey how it was common for households to take care of wounded soldiers. Thus, (b) is the right answer.

3 is incorrect as it confuses INTEND (aim to) with TEND.

Solution 12: B)

SETTLE means to relax into a comfortable position; 1 uses this word to convey how the dentist told Shubham to sit comfortably in the chair. SETTLE also means to end a dispute; 3 uses this word to convey how the company's decision may have ended one problem. Thus, (b) is the right answer.

2 is incorrect as it confuses SUBTLE (fine or delicate) with SETTLE; the sentence tells us how the pudding offers a fine vanilla taste to consumers.

Solution 13: D)

(d) is the right answer. The use of the preposition AT with FISHING is grammatically incorrect. The correct phrase is 'by fishing' which basically means to search for something. (d) conveys the requisite meaning of the highlighted phrase. The sentence talks about researchers finding the origin of the plague that destroyed Eurasia by searching shards of a bacterial DNA. The other options are both grammatically and contextually incorrect. VERIFYING means proving. HUNTING means seeking, capturing or killing. LOOKING AFTER refers to taking care of.

Solution 14: D)

(d) is the right answer. We need a verb in continuous form to fit in ARE + VERB present continuous form construction. Replace the second form verb 'LOOMED' with continuous form verb 'LOOMING'. The correct phrase is 'are looming' which means are appearing. (d) conveys the requisite meaning of the highlighted phrase. The sentence talks about the motivation we can get from the Gratitude Mile when the miles left to run appear to be large. The other options are both grammatically and contextually incorrect. BREWED means prepared. INTIMIDATING refers to frightening or threatening. MATERIALISED means took place or occurred.

Solution 15: C)

(c) is the right answer. We need a base form verb to fit in TO + VERB infinitive construction. Replace the continuous form verb ESCALATING with base form verb ESCALATE. The correct phrase is 'TO ESCALATE' which means to rise. (c) conveys the requisite meaning of the highlighted phrase. The sentence talks about an earthquake's effect in Afghanistan.

(a) and (b) are incorrect as the passive voice construction TO + BE + VERB will take a past participle form verb.

(d) is incorrect as the present continuous form verb ENLARGING should be replaced with the base form verb ENLARGE to fit in the infinitive construction TO + VERB.

Solution 16: B)

(b) is the right answer. We need a verb in base form to fit in TO + VERB infinitive construction.

The word HOPE (expect) in the highlighted phrase should be replaced by HOP. TO HOP ON means to jump on something. (b) conveys the requisite meaning of the highlighted phrase. The sentence talks about joining the latest wellness trend in search of self-improvement. The other options are grammatically incorrect.

(a) and (c) are incorrect as the verbs DIVING/ PLUNGING will need a preposition following them. (d) will not fit contextually.

Solution 17: C)

We need a noun to be modified by the indefinite article A. MEANS (way) will fit here as the sentence tells us how large-scale infrastructure development is considered to be method to achieve economic development and reduce poverty in developing countries. Thus, C is the right answer.

Summit - peak. Yield - output. Dearth - scarcity. Boon - blessing.

Solution 18: D)

We need an adjective to modify the noun RISKS. CONSIDERABLE (several) will fit here as the sentence tells us how large-scale infrastructure development projects pose many risks for local communities that live by the riverside. Thus, D is the right answer.

Inane - lacking sense; silly. Informed - knowledgeable; aware. Fragile - weak; delicate. Keen - eager.

Solution 19: A)

We need a plural verb to agree with the plural subject COMMUNITIES. DEPEND (count on; rely) will fit here as the sentence tells us how local communities rely on agricultural landscapes for their survival. Thus, A is the right answer.

Commend - praise; extol. Announce - declare. Detach - separate from a whole. Repeal - cancel.

Solution 20: B)

We need a preposition here to link the clauses of the sentence. AMID (among; in the middle of) will fit here as the sentence tells us how surrounded by concerns over hydro-electric projects, the IFC has begun focusing on the idea of sustainable hydropower. Thus, B is the right answer.

Against - in opposition to. Towards - in the direction of. Along - moving in a constant direction on. For - with the object or purpose of.

Solution 21: E)

We need a continuous form verb here as the sentence shows ongoing action. PROMOTING (encouraging; espousing) will fit here as the sentence tells us how surrounded by concerns over hydro-electric projects, the IFC has begun focusing on advocating the idea of sustainable hydropower. Thus, E is the right answer.

Aligning - arranging. Reviving - restoring to a former state. Offending - insulting. Hoarding - storing for later use.

Solution 22: D)

(d) is the right answer. Refer to the lines: *"For instance, a rural area would have been classified as urban if the streets were laid out in a grid."* It is explicitly stated in the above lines that rural areas can be classified as urban areas if they were laid out in a collection of horizontal and vertical lines.

None of the other options are correct as per the context of the passage.

Solution 23: C)

(c) is the right answer. Refer to the lines: *"While an urban area is a function of all these metrics, the definitional ambiguity remains a complex task."* The above lines imply that there is uncertainty regarding the exact definition of urban areas.

(a) is incorrect. Refer to the lines: *"The rapid rise of cities in developed economies dates back to 200 years, although it is much more recent in developing economies."*

(b) is incorrect. Refer to the lines: *"In Denmark, which has close to 88 per cent of the population living in cities, there are three classes of rural areas with distinctions between urban-adjacent, intermediate and remote rural areas and a further classification system that compiles the socio-economic profiles of its municipalities."*

(d) is incorrect. Refer to the lines: *"Among the Scandinavian countries, rural and urban spaces are classified on the basis of each other."*

(e) is incorrect. Refer to the lines: *"With almost 55 per cent of the population living in cities now and nearly 70 per cent projected to be living in cities by 2050, the attention toward understanding urban settings has never been more glaring."*

Solution 24: E)

(e) is the right answer. Refer to the lines: "According to the census definition, a habitation is classified as urban if it has a population of at least 5,000 people, at least 75 per cent of the male working population is employed in non-agricultural pursuits, and the population density is at least 400 people per square kilometre. These are also called Census Towns."

None of the given options are correct as per the passage.

SBI PO 2023**Take a FREE Mock Test**
Get Your All India RankPRACTICE **MOCK****Solution 25: A)**

(a) is the right answer. Refer to the lines: "An urban area's distinguishing characteristics are tied to its strategic role in the larger community, its value as a civilising force, and its role in enabling the market." Option (a) is explicitly stated in the above lines.

None of the other options are correct as per the passage.

Solution 26: A)

(a) is the right answer. DYNAMIC means constantly changing. FLUID (not settled or likely to change) is closest in meaning to the given word.

Haggard - tired. Languid - relaxed. Bereft - lacking something. Stoic - calm; without emotion.

Solution 27: D)

(d) is the right answer. SUBSUMING means containing or including. DENYING (refusing) will be its antonym.

Embracing/entailing - including or involving. Comprehending - understanding. Comprising - consisting.

Solution 28: C)

The sentence tells us how market forces have been moving (driving) the sector (industry) in the right direction but the government needs to step in (intervene) to help (assist). We need to interchange the verb HELP with the noun SECTOR, as we need a noun to be modified by the definite article THE, and a base form verb to fit in the TO + VERB infinitive construction. Thus, C is the right answer.

Solution 29: E)

The sentence tells us how we are heading (moving) into a post-antibiotic era (period) where common (general) infections could once again be deadly (fatal). All the words are correctly placed in the sentence. Thus, E is the right answer.

Solution 30: B)

The sentence tells us how we are failing (proving to be unsuccessful) to treat (cure) infections and patients are forced (compelled) to stay longer in care facilities to overcome (recover from) them. We need to interchange the verbs FORCED with TREAT, as we need a past participle verb to fit in the ARE + VERB passive voice construction, and a base form verb to fit in the TO + VERB infinitive construction. Thus, B is the right answer.

SBI PO Previous Year Questions – Reasoning

Directions(1-3): Answer the questions based on the information given below.

There are eight members in a family which consists of three generations and two married couples.

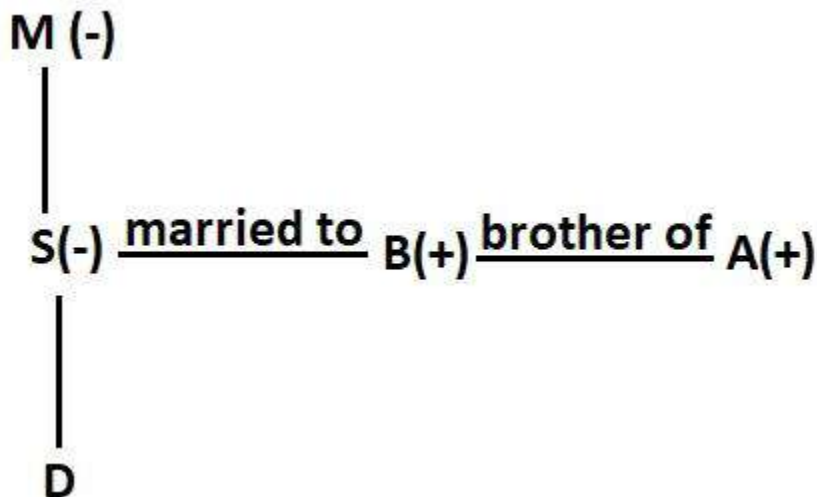
A is the brother-in-law of S, who is married. D is the granddaughter of N, who is a male. K is the father of R, who is the sister of S. B is the brother of A and the only son-in-law of M. M is the maternal grandmother of D.

Common Solution:

Clues:

1. M is the maternal grandmother of D.
2. B is the brother of A and the only son-in-law of M.
3. A is the brother-in-law of S, who is married.

Inference: From clues 1, 2 and 3 we conclude that M is the mother of D's mother. B is married to S.

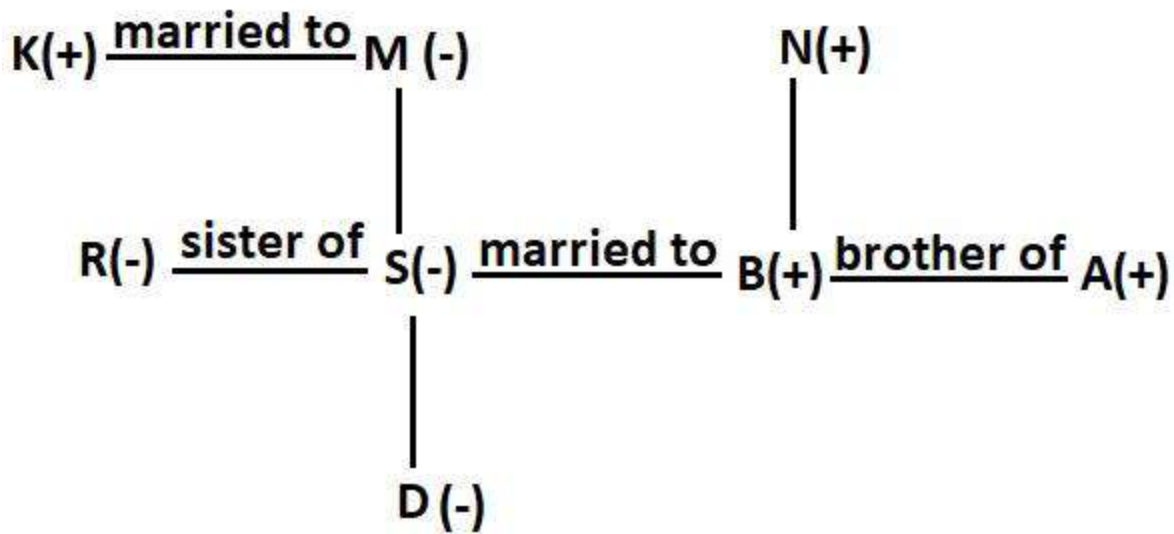


Clues:

4. K is the father of R, who is the sister of S.
5. D is the granddaughter of N, who is male.

Inference: From clues 4, 5, 6 and 7 we conclude that N is the paternal grandfather of D.

The family tree is given below:



Question 1: How is K related to B?

- A) Son
- B) Daughter
- C) Father-in law
- D) Daughter-in-law
- E) None of the above

Answer: C)

Solution:

K is the father-in-law of B.

Hence, option c.

Question 2: How is A related to N?

- A) Son-in-law
- B) Brother
- C) Son
- D) Nephew
- E) Can't be determined

Answer: C)

Solution:

PRACTICE MOCK

A is the son of N.

Hence, option c.

Question 3: How is A related to D?

- A) Nephew
- B) Niece
- C) Aunt
- D) Uncle
- E) Can't be determined

Answer: D)

Solution:

A is the uncle of D

Hence, option d.

Directions (4-8): Answer the questions based on the information given below.

Eight persons J, K, L, M, N, O, P and Q live on different floors of an eight-floor building such that the bottommost floor is numbered as 1 and the topmost floor is numbered as 8 but not necessarily in the same order. They work in eight different companies viz. HTC, Nike, Adidas, Spice, Dell, Nokia, HP, and Fila. One person works in only one company.

Q lives on an even numbered floor below the 6th floor. O lives three floors above Q. P works in Fila and lives on a floor above O. Three persons live between N and M. K and L works in Nike and Adidas respectively. Three persons live between P and J. N works in HTC and lives on an even numbered floor below P. K lives on one of the floors below L. J does not work in Spice, Dell or HP. Neither Q nor M works in Spice. M lives on an even numbered floor.

Common Solution:

Starting Point: Start with placing Q and O.

Clues:

1. Q lives on an even numbered floor below the 6th floor.
2. O live three floors above Q.
3. P works in Fila and lives on a floor above O.
4. Three persons live between P and J.

Inferences:

From clue 1, Q lives either on 4th or 2nd floor.

From clue 2, O lives either on 7th or 5th floor.

From clue 3, P lives on 8th, 6th, or 7th floor.

From clue 4, P lives on either 7th or 8th floor, J lives either on 3rd or 4th floor, Q lives on 2nd floor.

Case I: P lives on 7th floor.

Floors	Persons	Company
8		
7	P	Fila
6		
5	O	
4		
3	J	
2	Q	
1		

Case II: P lives on 8th floor.

Floors	Persons	Company
8	P	Fila
7		
6		
5	O	
4	J	
3		
2	Q	
1		

Clues:

5. N works in HTC and lives on an even numbered floor below P.

6. Three persons lives between N and M.

7, M lives on an even numbered floor.

8. K lives on one of the floors below L.

Inferences:

From clue 5, clue 6 and clue 7, N lives on 4th floor, Case II is rejected as N and M can't be placed.

From clue 7 and clue 8, M lives on 8th floor, K lives on 1st floor and L lives on 6th floor.

Floors	Persons	Company
8	M	
7	P	Fila
6	L	

5	O	
4	N	HTC
3	J	
2	Q	
1	K	

Clues:

9. K and L work in Nike and Adidas respectively.

10. J does not work in Spice, Dell or HP.

11. Neither Q nor M works in Spice.

Inferences:

From clue 10, J works in Nokia.

From clue 11, O works in Spice, either Q or M works in HP or Dell.

The final arrangement is as follows:

Floors	Persons	Company
8	M	HP/Dell
7	P	Fila
6	L	Adidas
5	O	Spice
4	N	HTC
3	J	Nokia
2	Q	Dell/HP
1	K	Nike

Question 4: Which of the following statements is/are definitely correct?

I. M works in Dell

II. Q works in HP

III. J works in Nokia

A) Only Statement I is correct

B) Only Statement II is correct

C) Only Statement III is correct

D) Only Statement I and II is correct

E) All Statements are correct

Answer: C)

Solution:

J works in Nokia is a correct statement.

Hence, option c.

Question 5: Who lives on 6th floor?

- A) N
- B) K
- C) L
- D) M
- E) None of the above

Answer: C)

Solution:

L lives on 6th floor.

Hence, option c.

Question 6: How many person(s) lives between the one, who works in Nokia and the one, who works in Spice?

- A) Three
- B) One
- C) Two
- D) Four
- E) None of the above

Answer: B)

Solution:

One person lives between the one, who works in Nokia and the one, who works in Spice

Hence, option b.

Question 7: M works in ____.

- A) Dell
- B) HP
- C) Nokia
- D) Either (a) or (b)

PRACTICE MOCK

E) Either (b) or (c)

Answer: D)

Solution:

M works in either Dell or HP.

Hence, option d.

SBI PO 2023

Take a **FREE** Mock Test
Get Your All India Rank

PRACTICE MOCK

Question 8: Person, who lives on 1st floor, works in_____.

- A) Adidas
- B) Nike
- C) Spice
- D) Nokia
- E) None of the above

Answer: B)

Solution:

Person, who lives on 1st floor, works in Nike.

Hence, option b.

Question 9: How many such pair(s) of letters are in the word "ATTENDANT" which has as many letters between them (both forward and backward) as in the English alphabetical series?

- A) None
- B) One
- C) Two
- D) Three
- E) None of the above

Answer: B)

Solution:

Given word:

ATTENDANT

There is one such pairs (NT) which have as many letters between them (both forward and backward) as in the English alphabetical series.

Hence, option b.

Question 10: If we add one to all the digits of the number **2625684775** and then arrange them in ascending order from the left end, then which digit will be 6th from the left end after the rearrangement?

- A) 5
- B) 7
- C) 8
- D) 9
- E) None of the above

Answer: B)

Solution:

Given number:

2625684775

After adding one to all digits:

3736795886

After rearrangement in ascending order:

3356677889

The 6th digit from the left end after rearrangement is 7.

Hence, option b.

Directions(11-15): Answer the questions based on the information given below.

Seven persons A, B, C, D, E, F and G are sitting in Row 1 facing north whereas S, T, V, W, X, Y, and Z are sitting in Row 2 facing south such that both rows are equidistant and parallel to each other. The persons sitting in Row 1 face the persons sitting in Row 2 and vice versa.

D sits 4th to the right of F, who sits 2nd to the left of E. Either F or D sits at one of the extreme ends. W faces E. Y does not sit at any extreme ends of the row. Two persons sit between A and B. C does not face V. X does not face F or D. Two persons sit between W and S. V sits 4th to the right of S, who does not sit adjacent to Z. A faces Y.

Common Solution:

Starting Point: Start with placing D, F, and E.

Clues:

1. D sits 4th to the right of F, who sits 2nd to the left of E.
2. Either F or D sits at one of the extreme ends.
3. W faces E.
4. Two persons sit between W and S.

Inferences:

From clue 1 and clue 2, E sits 3rd from either of the extreme ends of the row.

From clue 3 and clue 4, S sits 3rd to the left or 3rd to the right of W.

Case I: When E sits 3rd from extreme left end of row.

		W			S	
F		E		D		

Case II: When E sits 3rd from extreme right end of row.

	S			W		
		F		E		D

Clues:

5. V sits 4th to the right of S, who does not sit adjacent to Z.
6. A faces Y.
7. Y does not sit at any extreme ends of the row.
8. Two persons sit between A and B.

Inferences:

From clue 5, case II is rejected as V can't be placed. V sits immediate right of W.

From clue 6 and clue 7, A sits immediate left of D.

From clue 8, B sits 2nd to the right of D.

	V	W	Y		S	
F		E	A	D		B

Clues:

9. C does not face V.
10. X does not face F or D.

Inferences:

From clue 9, C faces S. G faces V.

From clue 10, B faces X.

From clue 4, Z faces F. T faces D.

The final arrangement is as follows:

Z	V	W	Y	T	S	X
F	G	E	A	D	C	B

Question 11: What is the position of A with respect to B?

- A) 2nd to the left
- B) 2nd to the right
- C) 3rd to the left
- D) 3rd to the right
- E) None of the above

Answer: C)

Solution:

A sits 3rd to the left of B.

Hence, option c.

Question 12: ____ sits 2nd to the left of Y.

- A) Z
- B) V
- C) X
- D) S
- E) W

Answer: D)

Solution:

S sits 2nd to the left of Y.

Hence, option d.

Question 13: How many persons sit between Z and the one, who faces D?

- A) Three

PRACTICE MOCK

- B) One
- C) Two
- D) None
- E) Cannot be determined

Answer: A)

Solution:

Three persons sit between Z and T, who faces D.

Hence, option a.

Question 14: D sits ____ to the left of C.

- A) Immediate
- B) Second
- C) Fourth
- D) Third
- E) None of the above

Answer: A)

Solution:

D sits immediate to the left of C.

Hence, option a.

Question 15: Which of the following statement is/are not correct?

- A) V sits immediate left of Z
- B) X sits immediate left of S
- C) E sits 2nd to the left of F
- D) E sits immediate right of G
- E) None of the above

Answer: C)

Solution:

E sits 2nd to the left of F is an incorrect statement.

PRACTICE MOCK

Hence, option c.

Question 16: In the question, assuming the given statements to be true, find which of the following conclusion(s) among the three conclusions is/are true and then give your answer accordingly.

Statement:

$$I \geq J \geq R = U \geq S; T < M < N; L = S \geq T$$

Conclusions:

I. $I \geq M$

II. $R \geq T$

III. $J > S$

A) Only conclusion III is true.

B) Only conclusion I and II are true.

C) Only conclusion II is true

D) Only conclusion II and III are true.

E) All the conclusions are true

Answer: C)

Solution:

Given:

$$I \geq J \geq R = U \geq S; T < M < N; L = S \geq T$$

On combining the given statement, we have

$$I \geq J \geq R = U \geq L = S \geq T < M < N$$

Conclusion:

I. $I \geq M$: False (As $I \geq J \geq R = U \geq L = S \geq T < M$, so relation between I and M cannot be determined)

II. $R \geq T$: True (As $R = U \geq L = S \geq T$, so $R \geq T$)

III. $J > S$: False (As $J \geq R = U \geq L = S$, so $J \geq S$)

Only conclusion II is true.

Hence, option c.

Question 17: In the question, assuming the given statements to be true, find which of the following conclusion(s) among the three conclusions is/are true and then give your answer accordingly.

Statement:

$$J < R < G < L < M; N > T > M; J > K = C$$

Conclusions:

I. $T < C$

II. $N < G$

III. $M > R$

A) Only conclusion III is true.

B) Only conclusion I and II are true.

C) Only conclusion II is true

D) Only conclusion II and III are true.

E) All the conclusions are true

Answer: A)

Solution:

Given:

$$J < R < G < L < M; N > T > M; J > K = C$$

On combining the given statement, we have,

$$C = K < J < R < G < L < M < T < N$$

Conclusion:

I. $T < C$: False (As $C = K < J < R < G < L < M < T$, so $T > C$)II. $N < G$: False (As $G < L < M < T < N$, so $N > G$)III. $M > R$: True (As $R < G < L < M$, so $M > R$)

Only conclusion III is true.

Hence, option a.

Question 18: In the question, assuming the given statements to be true, find which of the following conclusion(s) among the three conclusions is/are true and then give your answer accordingly.

Statement:

$$P = R \geq O = M, S < E \leq O, T < K \leq R$$

Conclusions:I. $P > S$ II. $T \geq O$ III. $E \leq R$

A) Only conclusion III is true.

B) Only conclusion I and III are true.

C) Only conclusion II is true

D) Only conclusion II and III are true.

E) All the conclusions are true

Answer: B)

Solution:

Given:

 $P = R \geq O = M, S < E \leq O, T < K \leq R$

On combining the given statement, we have,

 $T < K \leq P = R \geq O = M \geq E > S$

Conclusion:

I. $P > S$: True (As $P = R \geq O = M \geq E > S$, so $P > S$)II. $T \geq O$: False (As $T < K \leq P = R \geq O$, so relation between T and O cannot be determined)III. $E \leq R$: True (As $R \geq O = M \geq E$, so, $E \leq R$)

Only conclusion I and III are true.

Hence, option b.

Question 19: Which of the following symbols should be placed in the blank spaces respectively (in the same order from left to right) in order to complete the given expression in such a manner that ' $R \geq Y$ ' definitely holds true?

A _ R _ T _ L _ Y

A) $>, <, \geq, =$ B) $>, >, >, =$ C) $<, >, \geq, =$

D) $>, \geq, \geq, =$

E) $<, >, \geq, \leq$

Answer: D)

Solution:

On substituting option in given expression:

Option (a): $A > R < T \geq L = Y$: Relation between R and Y can't be determined.

Option (b): $A > R > T > L = Y$, so $R > Y$.

Option (c): $A < R > T \geq L = Y$, so $R > Y$.

Option (d): $A > R \geq T \geq L = Y$, so $R \geq Y$

Option (e): $A < R > T \geq L \leq Y$: Relation between R and Y can't be determined.

Hence, option d.

Directions(20-23): Answer the questions based on the information given below.

Nine persons are posted in the Indian army at different designations. Designations (from senior to junior) are Admiral, General, Brigadier, Lieutenant, Colonel, Major, Captain, Subedar, and Havildar i.e. Admiral is the highest designation and Havildar is the lowest designation.

Only three persons are junior to T. Two designations lie between the designations of O and R, who is senior to O. R is neither Admiral nor colonel. M is senior to Q but junior to U. U is junior to N. U is not designated as a lieutenant. Three designations lie between the designations of S and P, who is junior to T. S is not designated as Colonel.

Common Solution:

Starting Point: First consider the direct statements/clues.

Clue:

1. Only three persons are junior to T.
2. Three persons are designated between S and P, who is junior to T.
3. S is not designated as Colonel.

Inference: From clues 1, 2 and 3 we conclude that there will be two possible ways to arrange S and P.

Case 1: When S was Lieutenant.

Designation	Person
Admiral	
General	

Brigadier	
Lieutenant	S
Colonel	
Major	T
Captain	
Subedar	P
Havildar	

Case 2: When S was Brigadier.

Designation	Person
Admiral	
General	
Brigadier	S
Lieutenant	
Colonel	
Major	T
Captain	P
Subedar	
Havildar	

Clue:

4. Two persons are designated between O and R, who was senior to O.

5. R was neither Admiral nor colonel.

Inference:

From clue 4 and clue 5, O is the Colonel. R is the General.

Case 1: When S was Lieutenant.

Designation	Person
Admiral	
General	R
Brigadier	
Lieutenant	S
Colonel	O
Major	T
Captain	
Subedar	P
Havildar	

Case 2: When S was Brigadier.

Designation	Person
Admiral	
General	R
Brigadier	S

Lieutenant	
Colonel	O
Major	T
Captain	P
Subedar	
Havildar	

Clues:

6. M is senior to Q but junior to U.

7. U is junior to N.

8. U is not designated as a lieutenant.

Inference: From clues 6, 7 and 8, case 2 is rejected. And thus, N is the Admiral, U is the Brigadier, Q is the havildar.

The final table is given below:

Designation	Person
Admiral	N
General	R
Brigadier	U
Lieutenant	S
Colonel	O
Major	T
Captain	M
Subedar	P
Havildar	Q

Question 20: Who among the following is the Admiral?

- A) S
- B) R
- C) U
- D) N
- E) M

Answer: D)

Solution:

N is the Admiral.

Hence, option d.

Question 21: How many persons are junior to O?

- A) Three
- B) None
- C) Two
- D) Five
- E) None of the above

Answer: E)

Solution:

Four persons are junior to O.

Hence, option e.

Question 22: What is the designation of P?

- A) Subedar
- B) Captain
- C) Colonel
- D) Major
- E) None of the above

Answer: A)

Solution:

P is designated as Subedar.

Hence, option a.

Question 23: How many persons are designated between N and Captain?

- A) Four
- B) Three
- C) Five
- D) Six
- E) None of the above

Answer: C)

Solution:

PRACTICE MOCK

Five persons are designated between N and Captain.

Hence, option c.

SBI PO 2023

Take a **FREE** Mock Test
Get Your All India Rank

PRACTICE MOCK

Directions(24-28): Answer the following question based on the information given below.

In a certain code language,

I. 'some birds fly high' is written as 'rop, lup, rts, mus'

II. 'some fish swim deep' is written as 'rop, jhr, bjk, mok'.

III. 'birds are high' is written as 'vot, rts, lup'.

IV. 'high and deep' is written as 'bjk, lup, das'.

Common Solution:

From statement I, III and IV, 'high' is coded as 'lup'.

From statement I and II, 'some' is coded as 'rop'.

From statement I and III, 'birds' is coded as 'rts'.

From statement I alone, 'fly' is coded as 'mus'.

From statement II and IV, 'deep' is coded as 'bjk'.

From statement III alone, 'are' is coded as 'vot'.

From statement IV alone, 'and' is coded as 'das'.

From statement II, 'fish' and 'swim' is coded as 'jhr' and 'mok'.

Word	High	some	birds	fly	deep	and	are	fish	swim
Code	lup	rop	rts	mus	bjk	das	vot	mok/jhr	jhr/mok

Question 24: What is the code for 'deep'?

A) jhr

B) bjk

C) mok

D) das

E) None of the above

Answer: B)

Solution:

The code for 'deep' is 'bjk'.

Hence, option b.

Question 25: Which of the following is coded as 'vot'?

A) are

B) bird

C) high

D) deep

E) None of the above

Answer: A)

Solution:

'are' is coded as 'vot'.

Hence, option a.

Question 26: What is the code for 'fish and high'?

A) mok das lup

B) rts jhr mok

C) mok vot das

D) jhr das lup

E) Cannot be determined

Answer: E)

Solution:

Code for 'fish and high' can be 'mok das lup' or 'jhr das lup'.

Hence, option e.

Question 27: ___ is coded as 'mus'.

A) deep

B) birds

PRACTICE MOCK

- C) fly
- D) are
- E) None of the above

Answer: C)

Solution:

'fly' is coded as 'mus'.

Hence, option c.

Question 28: Which of the following statement is incorrect?

- A) 'and' is coded as 'das'.
- B) 'bjk' is the code for 'deep'.
- C) 'some birds' is coded as 'rop rts'.
- D) 'some fish' is coded as 'mok jhr'
- E) All statements are incorrect.

Answer: D)

Solution:

Option (a): Correct ('and' is coded as 'das'.)

Option (b): Correct ('bjk' is the code for 'deep'.)

Option (c): Correct ('some birds' is coded as 'rop rts'.)

Option (d): Incorrect ('some fish' is coded as 'rop mok' or 'rop jhr')

Hence, option d.

Directions(29-33): Answer the questions based on the information given below.

Eight persons (P, Q, R, S, T, U, V and W) were born in eight different years (1984, 1988, 1991, 1993, 1997, 2000, 2003 and 2008) but not necessarily in the same order.

Note: Consider all persons were born on 31st December in given years. Ages of these persons are calculated with respect to 31st December 2021.

S was born in an odd numbered year before Q. T is elder than S but not the eldest. V was born in one of the years before R and in a leap year. The age difference between W and P is 5 years. U was born in a leap year. Q is 10 years elder than W.

Common Solution:

Starting Point: First we calculate age of persons according to their birth year. (37, 33, 30, 28, 24, 21, 18 and 13) (in years) with respect to 31st December 2021. Now we start with definite clues/information.

Clues:

1. The age difference between W and P is 5 years.
2. Q is 10 years elder than W.

Inferences:

From clue 1 and 2, we get W was born in 2003, P was born in 2008, and Q was born in 1993.

Years	Ages	Persons
1984	37	
1988	33	
1991	30	
1993	28	Q
1997	24	
2000	21	
2003	18	W
2008	13	P

Clues:

3. S was born in an odd numbered year before Q.
4. T is elder than S but not the eldest.
5. V was born in one of the years before R and in a leap year.
6. U was born in a leap year.

Inferences:

From clue 3, we get S was born in 1991.

From clue 4, we get T was born in 1988.

From clue 5 and 6, V was born in 1984, R was born in 1997 and U was born in 2000.

The final arrangement is as follows:

Years	Ages	Persons
1984	37	V
1988	33	T
1991	30	S
1993	28	Q
1997	24	R
2000	21	U

2003	18	W
2008	13	P

Question 29: ___ was born in 1988.

- A) W
- B) P
- C) S
- D) T
- E) None of the above

Answer: D)

Solution:

T was born in 1988.

Hence, option d.

Question 30: V is ___ elder than S.

- A) 5 years
- B) 4 years
- C) 7 years
- D) 3 years
- E) None of the above

Answer: C)

Solution:

V is 7 years elder than S.

Hence, option c.

Question 31: How many persons are younger than U?

- A) Three
- B) One
- C) Two
- D) Five
- E) Four

PRACTICE MOCK

Answer: C)

Solution:

Two persons are younger than U.

Hence, option c.

Question 32: What is the sum of ages of V and R?

A) 58 years

B) 51 years

C) 61 years

D) 67 years

E) None of the above

Answer: C)

Solution:

The sum of ages of the V and R is $(37 + 24) = 61$ years.

Hence, option c.

Question 33: P was born in ____.

A) 2003

B) 2008

C) 1988

D) 1993

E) None of the above

Answer: B)

Solution:

P was born in 2008.

Hence, option b.

Question 34: In the question below some statements are given followed by two conclusions I and II. You have to take the given statements to be true even if they seem to be at variance with commonly known facts. Read all the conclusions and then decide which of the given conclusion definitely follows from the given statements, disregarding commonly known facts.

Statements:

A few Pens are Pencils

No Erasers are Pens

Some Crayons are Erasers

Conclusions:

I. Some Crayons are not Pens

II. At least Some Pencils are not Erasers

A) Neither Conclusion I nor Conclusion II follows

B) Only Conclusion I follows

C) Only Conclusion II follows

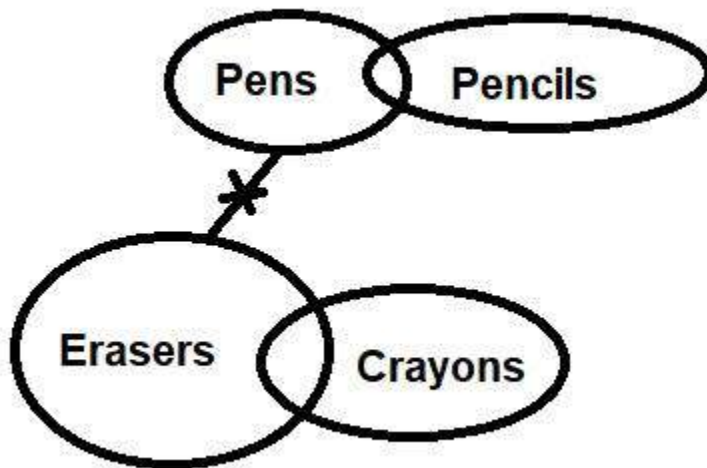
D) Both Conclusion I and Conclusion II follow

E) Either Conclusion I or Conclusion II follows

Answer: D)

Solution:

Following figure can be formed:



From the figure, both Conclusion I and Conclusion II follow.

Hence, option d.

Question 35: In the question below some statements are given followed by two conclusions I and II. You have to take the given statements to be true even if they seem to be at variance with commonly known facts. Read all the conclusions and then decide which of the given conclusion definitely follows from the given statements, disregarding commonly known facts.

Statements:

- No Wells are Taps
- Only Taps are Tubewells
- Only a few Taps are Pipes

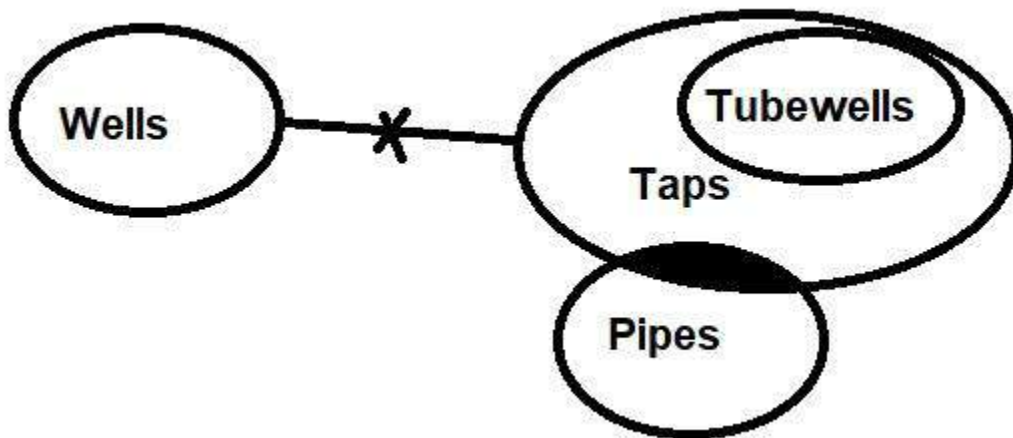
Conclusions:

- I. No Pipes are Tubewells
 - II. Some Wells being Tubewells is a possibility
- A) Neither Conclusion I nor Conclusion II follows
- B) Only Conclusion II follows
- C) Only Conclusion I follows
- D) Both Conclusion I and Conclusion II follow
- E) Either Conclusion I or Conclusion II follows

Answer: C)

Solution:

Following figure can be formed:



From the figure, only Conclusion I follows.

Hence, option c.